

ABflo® 647 Rabbit anti-Human CD100/SEMA4D mAb

Catalog No.: A24406

Basic Information

Observed MW

Calculated MW

82kDa/96kDa

Category

Primary antibody

Applications

FC

Cross-Reactivity

Human

CloneNo number

ARC63157-ABflo647

Conjugate

ABflo® 647. Ex:648nm. Em:664nm.

Background

Plexin-B1 is related to axon guidance in the central nervous system. The Sema4D function is also widely detected in the immune system and was found to be the first semaphorin expressed on the surface of many types of immune cells. In the immune system, CD72 is a low-affinity receptor for Sema4D, and studies have shown that Sema4D can not only regulate T cell activation, but also participate in the regulation of B cell survival and differentiation. In the immune system, soluble fragments containing extracellular domains produced by proteolytic cleavage can regulate many physiological functions of Sema4D. Sema4D is also associated with tumorigenesis because studies have confirmed that it is overexpressed in various types of solid tumor cells. To some extent, the role of Sema4D in tumorigenesis is related to its ability to cause tumor angiogenesis, cell invasion, and immunosuppression by enhancing bone marrow-derived suppressor cell function.

Recommended Dilutions

FC 5 µl per 10⁶ cells in
100 µl volume

Immunogen Information

Gene ID

10507

Swiss Prot

Q92854

Immunogen

Recombinant fusion protein containing a sequence corresponding to amino acids 22-734 of human Semaphorin-4D/CD100(NP_006369.3).

Synonyms

SEMA4D; C9orf164; CD100; M-sema-G; SEMAJ; coll-4; semaphorin-4D

Contact

☎ | 400-999-6126

✉ | cn.market@abclonal.com.cn

🌐 | www.abclonal.com.cn

Product Information

Source

Rabbit

Isotype

IgG

Purification

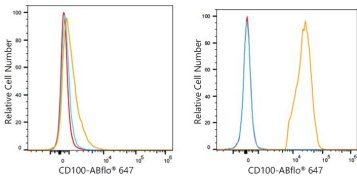
Affinity purification

Storage

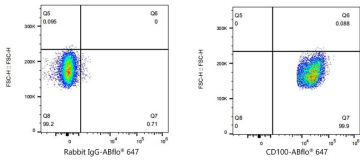
Store at 2-8°C. Avoid freeze.

Buffer: PBS with 0.03% proclin300,0.2% BSA,pH7.3.

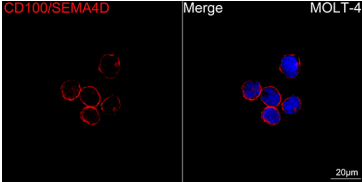
Validation Data



Flow cytometry:1X10⁶ PC-3 cells (negative control,Left) and Molt-4 cells(Right) were surface-stained with ABflo® 647 Rabbit anti-Human CD100/SEMA4D mAb(A24406,5 µl/Test,orange line) or ABflo® 647 Rabbit IgG isotype control (A22070,5 µl/Test,blue line). Non-fluorescently stained cells were used as blank control (red line).



Flow cytometry:1X10⁶ Molt-4 cells were surface-stained with ABflo® 647 Rabbit IgG isotype control (A22070,5 µl/Test,left) or ABflo® 647 Rabbit anti-Human CD100/SEMA4D mAb(A24406,5 µl/Test,right).



Confocal imaging of MOLT-4 cells using ABflo® 647 Rabbit anti-Human CD100/SEMA4D mAb (A24406, dilution 1:50). DAPI was used for nuclear staining (Blue). Objective: 100x.