

# ABflo® 488 Rabbit anti-Human Podoplanin mAb

Catalog No.: A24408

## Basic Information

### Observed MW

### Calculated MW

12kDa/16kDa/18kDa/24kDa

### Category

Primary antibody

### Applications

FC

### Cross-Reactivity

Human

### CloneNo number

ARC63004-ABflo488

### Conjugate

ABflo® 488. Ex:491nm. Em:516nm.

## Recommended Dilutions

FC 5 µl per 10<sup>6</sup> cells in  
100 µl volume

## Background

This gene encodes a type-I integral membrane glycoprotein with diverse distribution in human tissues. The physiological function of this protein may be related to its mucin-type character. The homologous protein in other species has been described as a differentiation antigen and influenza-virus receptor. The specific function of this protein has not been determined but it has been proposed as a marker of lung injury. Alternatively spliced transcript variants encoding different isoforms have been identified.

## Immunogen Information

### Gene ID

10630

### Swiss Prot

Q86YL7

### Immunogen

Recombinant fusion protein containing a sequence corresponding to amino acids 21-123 of Human Podoplanin(NM\_006474.5).

### Synonyms

PDPN; AGGRUS; GP36; GP40; Gp38; HT1A-1; OTS8; PA2.26; T1A; T1A-2; T1A2; T1A; podoplanin

## Contact

☎ | 400-999-6126

✉ | [cn.market@abclonal.com.cn](mailto:cn.market@abclonal.com.cn)

🌐 | [www.abclonal.com.cn](http://www.abclonal.com.cn)

## Product Information

### Source

Rabbit

### Isotype

IgG

### Purification

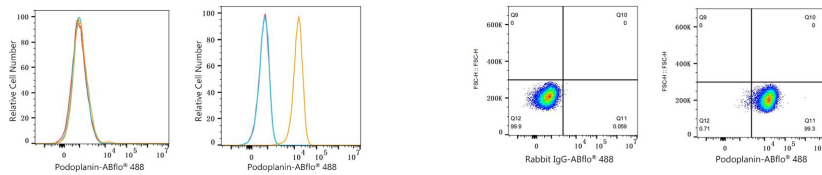
Affinity purification

### Storage

Store at 2-8°C. Avoid freeze.

Buffer: PBS with 0.03% proclin300,0.2% BSA,pH7.3.

## Validation Data



Flow cytometry:  $1 \times 10^6$  knockout (KO) 293T cells (negative control, Left) and 293T (right) cells were surface-stained with ABflo® 488 Rabbit anti-Human Podoplanin mAb (A24408, 5  $\mu$ l/Test, orange line) or ABflo® 488 Rabbit IgG isotype control (A22069, 5  $\mu$ l/Test, blue line). Non-fluorescently stained cells were used as blank control (red line).

Flow cytometry:  $1 \times 10^6$  293T cells were surface-stained with ABflo® 488 Rabbit IgG isotype control (A22069, 5  $\mu$ l/Test, left) or ABflo® 488 Rabbit anti-Human Podoplanin mAb (A24408, 5  $\mu$ l/Test, right).