

ABflo® 647 Rabbit anti-Human CD26/DPP4 mAb

Catalog No.: A24411

Basic Information

Observed MW

Refer to figures

Calculated MW

88kDa

Category

Primary antibody

Applications

FC

Cross-Reactivity

Human

CloneNo number

ARC59223-ABf647

Conjugate

ABflo® 647. Ex:648nm. Em:664nm.

Recommended Dilutions

FC 5 µl per 10⁶ cells in
100 µl volume

Background

The protein encoded by this gene is identical to adenosine deaminase complexing protein-2, and to the T-cell activation antigen CD26. It is an intrinsic membrane glycoprotein and a serine exopeptidase that cleaves X-proline dipeptides from the N-terminus of polypeptides.

Immunogen Information

Gene ID

1803

Swiss Prot

P27487

Immunogen

Recombinant fusion protein containing a sequence corresponding to amino acids 29-766 of human CD26/DPP4(NP_001926.2)

Synonyms

DPP4; ADABP; ADCP2; CD26; DPPIV; TP103; dipeptidyl peptidase 4

Contact

 | 400-999-6126

 | cn.market@abclonal.com.cn

 | www.abclonal.com.cn

Product Information

Source

Rabbit

Isotype

IgG

Purification

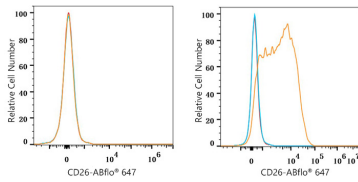
Affinity purification

Storage

Store at 2-8°C. Avoid freeze.

Buffer: PBS with 0.03% proclin300,0.2% BSA,pH7.3.

Validation Data



Flow cytometry: 1×10^6 K-562 cells (negative control, left) and NCI-H2452 cells (right) were surface-stained with ABflo® 647 Rabbit anti-Human CD26/DPP4 mAb (A24411, 5 μ l/Test, orange line) or ABflo® 647 Rabbit IgG isotype control (A22070, 5 μ l/Test, blue line). Non-fluorescently stained cells were used as blank control (red line).