

ABflo® 488 Rabbit anti-Mouse F4/80/ADGRE1 mAb

Catalog No.: A24412

Basic Information

Observed MW

Refer to figures

Calculated MW

102kDa

Category

Primary antibody

Applications

FC

Cross-Reactivity

Mouse

CloneNo number

ARC62251-ABflo488

Conjugate

ABflo® 488. Ex:491nm. Em:516nm.

Recommended Dilutions

FC 5 µl per 10⁶ cells in
100 µl volume

Background

Predicted to enable G protein-coupled receptor activity. Predicted to be involved in adenylate cyclase-activating G protein-coupled receptor signaling pathway. Predicted to act upstream of or within G protein-coupled receptor signaling pathway and adaptive immune response. Located in external side of plasma membrane. Is expressed in several structures, including cardiovascular system; central nervous system; genitourinary system; hemolymphoid system; and intestine. Orthologous to human ADGRE1 (adhesion G protein-coupled receptor E1).

Immunogen Information

Gene ID

13733

Swiss Prot

Q61549

Immunogen

Recombinant fusion protein containing a sequence corresponding to amino acids 367-645 of mouse F4/80/ADGRE1(NP_034260.1).

Synonyms

Emr1; Ly71; F4/80; Gpf480; TM7LN3; DD7A5-7; EGF-TM7

Contact

 | 400-999-6126

 | cn.market@abclonal.com.cn

 | www.abclonal.com.cn

Product Information

Source

Rabbit

Isotype

IgG

Purification

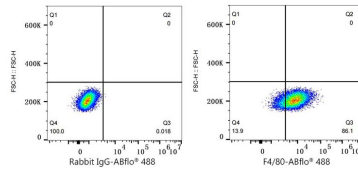
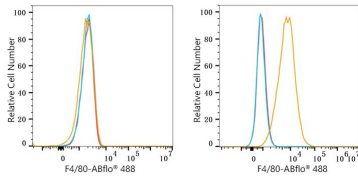
Affinity purification

Storage

Store at 2-8°C. Avoid freeze.

Buffer: PBS with 0.03% proclin300,0.2% BSA,pH7.3.

Validation Data



Flow cytometry: 1×10^6 NIH/3T3 cells (negative control, left) and RAW 264.7 cells (right) were surface-stained with ABflo® 488 Rabbit anti-Mouse F4/80/ADGRE1 mAb (A24412,5 µl/Test, orange line) or ABflo® 488 Rabbit IgG isotype control (A22069,5 µl/Test, blue line). Non-fluorescently stained cells were used as blank control (red line).

Flow cytometry: 1×10^6 RAW 264.7 cells were surface-stained with ABflo® 488 Rabbit IgG isotype control (A22069,5 µl/Test, left) or ABflo® 488 Rabbit anti-Mouse F4/80/ADGRE1 mAb (A24412,5 µl/Test, right).