

# TNFRSF14/HVEM Rabbit mAb

Catalog No.: A24416 **Recombinant**

## Basic Information

### Observed MW

Refer to figures

### Calculated MW

21kDa/30kDa

### Category

Primary antibody

### Applications

ELISA,FC

### Cross-Reactivity

Human

### CloneNo number

ARC62197

## Background

This gene encodes a member of the TNF (tumor necrosis factor) receptor superfamily. The encoded protein functions in signal transduction pathways that activate inflammatory and inhibitory T-cell immune response. It binds herpes simplex virus (HSV) viral envelope glycoprotein D (gD), mediating its entry into cells. Alternative splicing results in multiple transcript variants.

## Recommended Dilutions

FC 1:100 - 1:500

## Immunogen Information

### Gene ID

8764

### Swiss Prot

Q92956

### Immunogen

Recombinant fusion protein containing a sequence corresponding to amino acids 39-162 of human TNFRSF14/HVEM(NP\_003811.2)

### Synonyms

TNFRSF14; ATAR; CD270; HVEA; HVEM; LIGHTR; TR2; TNF receptor superfamily member 14; TNFRSF14/HVEM

## Contact

 | 400-999-6126

 | [cn.market@abclonal.com.cn](mailto:cn.market@abclonal.com.cn)

 | [www.abclonal.com.cn](http://www.abclonal.com.cn)

## Product Information

### Source

Rabbit

### Isotype

IgG

### Purification

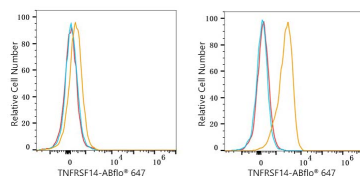
Affinity purification

### Storage

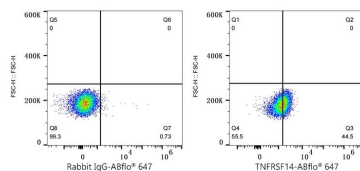
Store at -20°C. Avoid freeze / thaw cycles.

Buffer: PBS with 0.05% proclin300,0.05% BSA,50% glycerol,pH7.3.

## Validation Data



Flow cytometry:  $1 \times 10^6$  HAP1 cells (negative control, left) and HEL cells (right) were surface-stained with TNFRSF14/HVEM Rabbit mAb(A24416, 2µg/mL, orange line) or ABflo® 647 Rabbit IgG isotype control (A22070, 2µg/mL, blue line), followed by Alexa Fluor® 647 conjugated goat anti-rabbit pAb staining. Non-fluorescently stained cells were used as blank control (red line).



Flow cytometry:  $1 \times 10^6$  HEL cells were surface-stained with ABflo® 647 Rabbit IgG isotype control (A22070, 2 µg/mL, left) or TNFRSF14/HVEM Rabbit mAb(A24416, 2 µg/mL, right).