

# ESR $\alpha$ Rabbit mAb

Catalog No.: A24421 **Recombinant** **1 Publications**

## Basic Information

### Observed MW

66kDa

### Calculated MW

66kDa

### Category

Primary antibody

### Applications

WB,IP,ELISA,ChIP,FC (intra)

### Cross-Reactivity

Human

### CloneNo number

ARC61898

## Background

This gene encodes an estrogen receptor and ligand-activated transcription factor. The canonical protein contains an N-terminal ligand-independent transactivation domain, a central DNA binding domain, a hinge domain, and a C-terminal ligand-dependent transactivation domain. The protein localizes to the nucleus where it may form either a homodimer or a heterodimer with estrogen receptor 2. The protein encoded by this gene regulates the transcription of many estrogen-inducible genes that play a role in growth, metabolism, sexual development, gestation, and other reproductive functions and is expressed in many non-reproductive tissues. The receptor encoded by this gene plays a key role in breast cancer, endometrial cancer, and osteoporosis. This gene is reported to have dozens of transcript variants due to the use of alternate promoters and alternative splicing, however, the full-length nature of many of these variants remain uncertain.

## Recommended Dilutions

**WB** 1:1000 - 1:6000

**IP** 0.5 $\mu$ g-4 $\mu$ g antibody for  
400 $\mu$ g-600 $\mu$ g extracts of  
whole cells

**ELISA** Recommended starting  
concentration is 1  $\mu$ g/mL.  
Please optimize the  
concentration based on  
your specific assay  
requirements.

**ChIP** 5 $\mu$ g antibody for  
10 $\mu$ g-15 $\mu$ g of Chromatin.

**FC (intra)** 1:500 - 1:1000

## Contact

 | 400-999-6126

 | [cn.market@abclonal.com.cn](mailto:cn.market@abclonal.com.cn)

## Immunogen Information

### Gene ID

2099

### Swiss Prot

P03372

### Immunogen

Synthetic peptide. This information is considered to be commercially sensitive.

### Synonyms

ER; ESR $\alpha$

## Product Information

### Source

Rabbit

### Isotype

IgG

### Purification

Affinity purification

### Storage

Store at -20°C. Avoid freeze / thaw cycles.

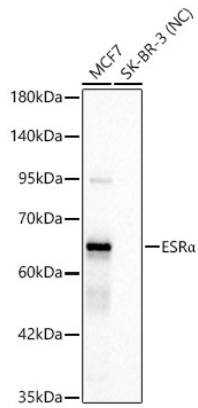
Buffer: PBS containing 50% glycerol and 0.05% BSA, preserved with proclin300 or sodium azide (as specified on the Certificate of Analysis), pH 7.3.



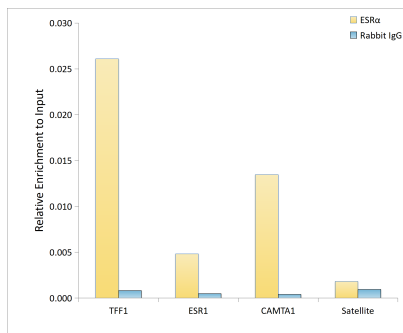
| [www.abclonal.com.cn](http://www.abclonal.com.cn)

---

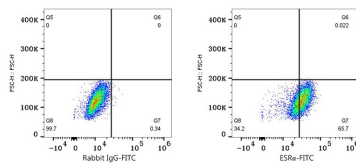
## Validation Data



Western blot analysis of various lysates, using ESR $\alpha$  Rabbit mAb (A24421) at 1:1000 dilution. Secondary antibody: HRP-conjugated Goat anti-Rabbit IgG (H+L) (AS014) at 1:10000 dilution. Lysates/proteins: 25 $\mu$ g per lane. Blocking buffer: 3% nonfat dry milk in TBST. Detection: ECL Basic Kit (RM00020). Negative control (NC): SK-BR-3. Exposure time: 3s.



Chromatin immunoprecipitation analysis of extracts of MCF7 cells treated by  $\beta$ -estradiol (10 nM, 45 minutes), using ESR $\alpha$  Rabbit mAb(A24421) and rabbit IgG. The amount of immunoprecipitated DNA was checked by quantitative PCR. Histogram was constructed by the ratios of the immunoprecipitated DNA to the input.



Flow cytometry:  $1 \times 10^6$  MCF7 cells were intracellularly-stained with Rabbit IgG isotype control (AC042, 2  $\mu$ g/mL, left) or ESR $\alpha$  Rabbit mAb (A24421, 2  $\mu$ g/mL, right), followed by FITC conjugated goat anti-rabbit pAb staining.