

Mouse G-CSF Rabbit mAb

Catalog No.: A24423 **Recombinant**

Basic Information

Observed MW

50-60kDa (Recombinant Protein)

Calculated MW

22kDa

Category

Primary antibody

Applications

WB, ELISA

Cross-Reactivity

Mouse

CloneNo number

ARC63775

Background

Enables granulocyte colony-stimulating factor receptor binding activity. Acts upstream of or within positive regulation of myeloid cell differentiation. Predicted to be located in endocytic vesicle lumen and extracellular region. Predicted to be active in extracellular space. Is expressed in several structures, including brain; dorsal aorta; liver; reproductive system; and yolk sac. Human ortholog(s) of this gene implicated in several diseases, including allergic cutaneous vasculitis; artery disease (multiple); ischemia (multiple); leukemia (multiple); and lung disease (multiple). Orthologous to human CSF3 (colony stimulating factor 3).

Recommended Dilutions

WB 1:1000 - 1:2000

ELISA Recommended starting concentration is 1 µg/mL. Please optimize the concentration based on your specific assay requirements.

Immunogen Information

Gene ID

12985

Swiss Prot

P09920

Immunogen

Recombinant protein (or fragment). This information is considered to be commercially sensitive.

Synonyms

Csfg; G-CSF; MGI-IG; Mouse G-CSF

Contact

☎ | 400-999-6126

✉ | cn.market@abclonal.com.cn

🌐 | www.abclonal.com.cn

Product Information

Source

Rabbit

Isotype

IgG

Purification

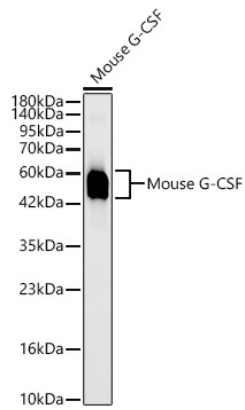
Affinity purification

Storage

Store at -20°C. Avoid freeze / thaw cycles.

Buffer: PBS containing 50% glycerol and 0.05% BSA, preserved with proclin300 or sodium azide (as specified on the Certificate of Analysis), pH 7.3.

Validation Data



Western blot analysis of lysates from Mouse G-CSF, using Mouse G-CSF Rabbit mAb (A24423) at 1:1000 dilution.

Secondary antibody: HRP-conjugated Goat anti-Rabbit IgG (H+L) (AS014) at 1:10000 dilution.

Lysates/proteins: 25µg per lane.

Blocking buffer: 3% nonfat dry milk in TBST.

Detection: ECL Basic Kit (RM00020).

Exposure time: 90s.