

CGRP Rabbit mAb

Catalog No.: A24424 **Recombinant** **2 Publications**

Basic Information

Observed MW
15kDa (Full-length)

Calculated MW
15kDa

Category
Primary antibody

Applications
WB,IF/ICC,ELISA

Cross-Reactivity
Human

CloneNo number
ARC63672

Background

This gene encodes the peptide hormones calcitonin, calcitonin gene-related peptide and katalcalcin by tissue-specific alternative RNA splicing of the gene transcripts and cleavage of inactive precursor proteins. Calcitonin is involved in calcium regulation and acts to regulate phosphorus metabolism. Calcitonin gene-related peptide functions as a vasodilator and as an antimicrobial peptide while katalcalcin is a calcium-lowering peptide. Multiple transcript variants encoding different isoforms have been found for this gene.

Recommended Dilutions

WB 1:2000 - 1:8000

IF/ICC 1:200 - 1:800

ELISA Recommended starting concentration is 1 µg/mL. Please optimize the concentration based on your specific assay requirements.

Immunogen Information

Gene ID 796	Swiss Prot P06881
-----------------------	-----------------------------

Immunogen
Synthetic peptide. This information is considered to be commercially sensitive.

Synonyms
CT; KC; PCT; CGRP; CALC1; CGRP1; CGRP-I; CGRP-alpha

Contact

☎ | 400-999-6126

✉ | cn.market@abclonal.com.cn

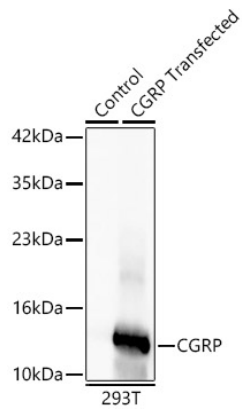
🌐 | www.abclonal.com.cn

Product Information

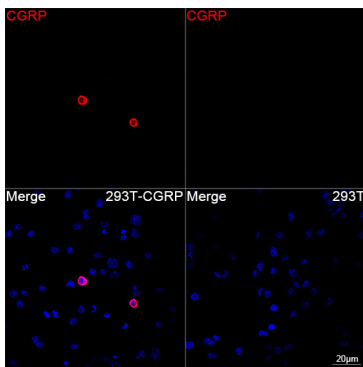
Source Rabbit	Isotype IgG	Purification Affinity purification
-------------------------	-----------------------	--

Storage
Store at -20°C. Avoid freeze / thaw cycles.
Buffer: PBS containing 50% glycerol and 0.05% BSA, preserved with proclin300 or sodium azide (as specified on the Certificate of Analysis), pH 7.3.

Validation Data



Western blot analysis of lysates from control 293T cells and CGRP-293T transfected cells, using CGRP Rabbit mAb (A24424) at 1:2000 dilution.
Secondary antibody: HRP-conjugated Goat anti-Rabbit IgG (H+L) (AS014) at 1:10000 dilution.
Lysates/proteins: 25µg per lane.
Blocking buffer: 3% nonfat dry milk in TBST.
Detection: ECL Basic Kit (RM00020).
Exposure time: 15s.



Confocal imaging of 293T cells transfected with CGRP using CGRP Rabbit mAb (A24424, dilution 1:200) followed by a further incubation with Cy3-conjugated Goat anti-Rabbit IgG (H+L) (AS007, dilution 1:500) (Red). DAPI was used for nuclear staining (Blue). Objective: 100x.