

# HLA-G Rabbit mAb

Catalog No.: A24425 **Recombinant**

## Basic Information

### Observed MW

30-40kDa

### Calculated MW

38kDa

### Category

Primary antibody

### Applications

ELISA, WB, IF/ICC

### Cross-Reactivity

Human

### CloneNo number

ARC63292

## Background

HLA-G belongs to the HLA class I heavy chain paralogues. This class I molecule is a heterodimer consisting of a heavy chain and a light chain (beta-2 microglobulin). The heavy chain is anchored in the membrane. HLA-G is expressed on fetal derived placental cells. The heavy chain is approximately 45 kDa and its gene contains 8 exons. Exon one encodes the leader peptide, exons 2 and 3 encode the alpha1 and alpha2 domain, which both bind the peptide, exon 4 encodes the alpha3 domain, exon 5 encodes the transmembrane region, and exon 6 encodes the cytoplasmic tail.

## Recommended Dilutions

<b>WB</b>	1:5000 - 1:10000
<b>IF/ICC</b>	1:50 - 1:200

## Immunogen Information

### Gene ID

3135

### Swiss Prot

P17693

### Immunogen

A synthetic peptide corresponding to a sequence within amino acids 50-150 of human HLA-G (NP\_002118.1).

### Synonyms

MHC-G; HLA-G

## Contact

 | 400-999-6126

 | [cn.market@abclonal.com.cn](mailto:cn.market@abclonal.com.cn)

 | [www.abclonal.com.cn](http://www.abclonal.com.cn)

## Product Information

### Source

Rabbit

### Isotype

IgG

### Purification

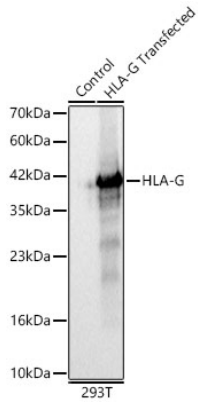
Affinity purification

### Storage

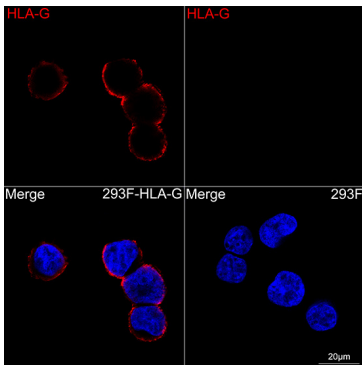
Store at -20°C. Avoid freeze / thaw cycles.

Buffer: PBS with 0.05% proclin300, 0.05% BSA, 50% glycerol, pH7.3.

## Validation Data



Western blot analysis of extracts of wild type (WT) and 293T cells transfected with HLA-G using HLA-G Rabbit mAb (A24425) at 1:10000 dilution.  
Secondary antibody: HRP Goat Anti-Rabbit IgG (H+L) (AS014) at 1:10000 dilution.  
Lysates/proteins: 25ug per lane.  
Blocking buffer: 3% nonfat dry milk in TBST.  
Detection: ECL Basic Kit (RM00020).  
Exposure time: 0.3s.



Confocal imaging of 293F-HLA-G and 293F cells cells using HLA-G Rabbit mAb (A24425,dilution 1:200)(Red). DAPI was used for nuclear staining (blue). Objective: 100x.