

# CD101/IGSF2 Rabbit mAb

Catalog No.: A24427 **Recombinant**

## Basic Information

### Observed MW

140kDa

### Calculated MW

115kDa

### Category

Primary antibody

### Applications

ELISA,WB,IF/ICC,FC

### Cross-Reactivity

Human, Mouse

### CloneNo number

ARC62615

## Background

Predicted to enable hydrolase activity, acting on carbon-nitrogen (but not peptide) bonds, in cyclic amides. Predicted to be involved in cell surface receptor signaling pathway. Predicted to act upstream of or within positive regulation of myeloid leukocyte differentiation. Located in extracellular exosome.

## Recommended Dilutions

<b>WB</b>	1:1000 - 1:6000
<b>IF/ICC</b>	1:200 - 1:800
<b>FC</b>	1:100 - 1:500

## Immunogen Information

### Gene ID

9398

### Swiss Prot

Q93033

### Immunogen

Recombinant fusion protein containing a sequence corresponding to amino acids 21-410 of human CD101/IGSF2 (NP\_004249.2).

### Synonyms

V7; IGSF2; EWI-101

## Contact

☎ | 400-999-6126

✉ | [cn.market@abclonal.com.cn](mailto:cn.market@abclonal.com.cn)

🌐 | [www.abclonal.com.cn](http://www.abclonal.com.cn)

## Product Information

### Source

Rabbit

### Isotype

IgG

### Purification

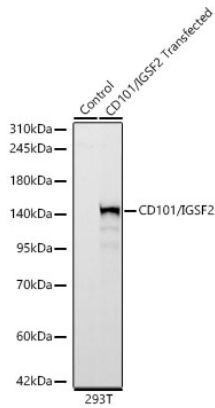
Affinity purification

### Storage

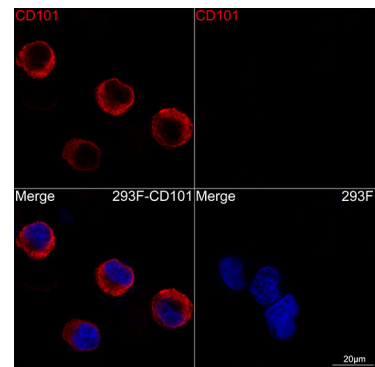
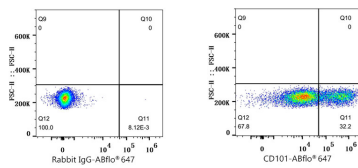
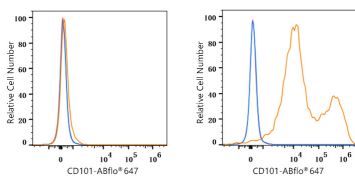
Store at -20°C. Avoid freeze / thaw cycles.

Buffer: PBS with 0.05% proclin300,0.05% BSA,50% glycerol,pH7.3.

## Validation Data



Western blot analysis of lysates from normal 293T cells and 293T transfected with CD101/IGSF2 protein, using CD101/IGSF2 Rabbit mAb (A24427) at 1:1000 dilution.  
 Secondary antibody: HRP-conjugated Goat anti-Rabbit IgG (H+L) (AS014) at 1:10000 dilution.  
 Lysates/proteins: 25µg per lane.  
 Blocking buffer: 3% nonfat dry milk in TBST.  
 Detection: ECL Basic Kit (RM00020).  
 Exposure time: 10s.



Flow cytometry:  $1 \times 10^6$  293F cells (negative control, left) and 293F (Transfection, right) cells were surface-stained with CD101/IGSF2 Rabbit mAb (A24427, 2 µg/mL, orange line) or ABflo® 647 Rabbit IgG isotype control (A22070, 5 µl/Test, blue line), followed by Alexa Fluor® 647 conjugated goat anti-rabbit pAb staining. Non-fluorescently stained cells were used as blank control (red line).

Flow cytometry:  $1 \times 10^6$  293F (Transfection) cells were surface-stained with ABflo® 647 Rabbit IgG isotype control (A22070, 5 µl/Test, left) or CD101/IGSF2 Rabbit mAb (A24427, 2 µg/mL, right).

Confocal imaging of 293F cells transfected with CD101 using CD101/IGSF2 Rabbit mAb (A24427, dilution 1:200) followed by a further incubation with Cy3 Goat Anti-Rabbit IgG (H+L) (AS007, dilution 1:500) (Red). DAPI was used for nuclear staining (Blue). Objective: 100x.