

MRRF Rabbit mAb

Catalog No.: A2443 **Recombinant**

Basic Information

Observed MW

29kDa

Calculated MW

29kDa

Category

Primary antibody

Applications

ELISA, WB

Cross-Reactivity

Human, Mouse, Rat

CloneNo number

ARC2589

Conjugate

Unmodified

Recommended Dilutions

WB 1:500 - 1:1000

Background

This gene encodes a ribosome recycling factor, which is a component of the mitochondrial translational machinery. The encoded protein, along with mitochondrial elongation factor 2, functions in ribosomal recycling at the termination of mitochondrial translation by mediating the disassembly of ribosomes from messenger RNA. A pseudogene of this gene has been identified on chromosome X.

Immunogen Information

Gene ID

92399

Swiss Prot

Q96E11


Immunogen

A synthetic peptide corresponding to a sequence within amino acids 163-262 of human MRRF (Q96E11).

Synonyms

RRF; MRFF; MTRRF; MRRF

Contact

 | 400-999-6126

 | cn.market@abclonal.com.cn

 | www.abclonal.com.cn

Product Information

Source

Rabbit

Isotype

IgG

Purification

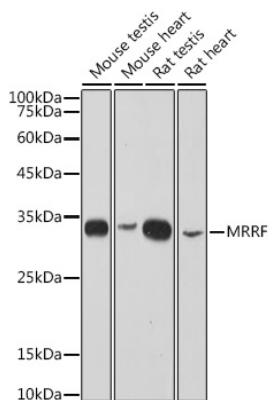
Affinity purification

Storage

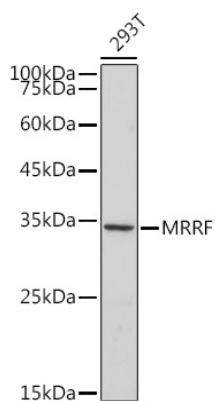
Store at -20°C. Avoid freeze / thaw cycles.

Buffer: PBS with 0.02% sodium azide, 0.05% BSA, 50% glycerol, pH7.3.

Validation Data



Western blot analysis of extracts of various cell lines, using MRRF antibody (A2443) at 1:1000 dilution.
Secondary antibody: HRP Goat Anti-Rabbit IgG (H+L) (AS014) at 1:10000 dilution.
Lysates/proteins: 25µg per lane.
Blocking buffer: 3% nonfat dry milk in TBST.
Detection: ECL Basic Kit (RM00020).
Exposure time: 30s.



Western blot analysis of extracts of 293T cells, using MRRF antibody (A2443) at 1:1000 dilution.
Secondary antibody: HRP Goat Anti-Rabbit IgG (H+L) (AS014) at 1:10000 dilution.
Lysates/proteins: 25µg per lane.
Blocking buffer: 3% nonfat dry milk in TBST.
Detection: ECL Basic Kit (RM00020).
Exposure time: 180s.