

[KO Validated] Cytokeratin 8 Rabbit pAb

Catalog No.: A24434 **KO Validated**

Basic Information

Observed MW

62kDa

Calculated MW

54kDa

Category

Primary antibody

Applications

WB

Cross-Reactivity

Human, Mouse

Background

This gene is a member of the type II keratin family clustered on the long arm of chromosome 12. Type I and type II keratins heteropolymerize to form intermediate-sized filaments in the cytoplasm of epithelial cells. The product of this gene typically dimerizes with keratin 18 to form an intermediate filament in simple single-layered epithelial cells. This protein plays a role in maintaining cellular structural integrity and also functions in signal transduction and cellular differentiation. Mutations in this gene cause cryptogenic cirrhosis. Alternatively spliced transcript variants have been found for this gene.

Recommended Dilutions

WB 1:500 - 1:1000

Immunogen Information

Gene ID

3856

Swiss Prot

P05787

Immunogen

A synthetic peptide corresponding to a sequence within amino acids 380-480 of human Cytokeratin 8 (NP_002264.1).

Synonyms

K8; KO; CK8; CK-8; CYK8; K2C8; CARD2; 8

Contact

☎ | 400-999-6126

✉ | cn.market@abclonal.com.cn

🌐 | www.abclonal.com.cn

Product Information

Source

Rabbit

Isotype

IgG

Purification

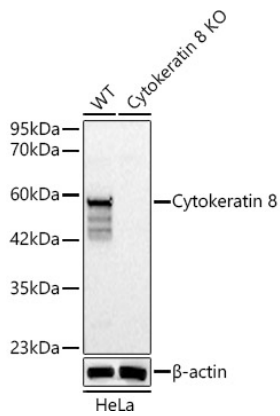
Affinity purification

Storage

Store at -20°C. Avoid freeze / thaw cycles.

Buffer: PBS with 0.05% proclin300,50% glycerol,pH7.3.

Validation Data



Western blot analysis of lysates from wild type (WT) and Cytokeratin 8 knockout (KO) HeLa cells, using Cytokeratin 8 Rabbit pAb (A24434) at 1:1000 dilution.

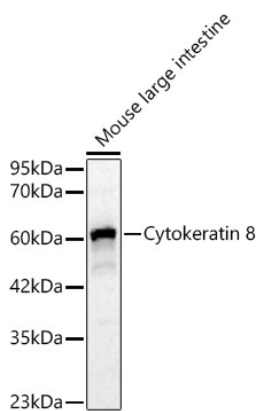
Secondary antibody: HRP Goat Anti-Rabbit IgG (H+L) (AS014) at 1:10000 dilution.

Lysates/proteins: 25ug per lane.

Blocking buffer: 3% nonfat dry milk in TBST.

Detection: ECL Basic Kit (RM00020).

Exposure time: 0.5s.



Western blot analysis of lysates from Mouse large intestine, using Cytokeratin 8 Rabbit pAb (A24434) at 1:1000 dilution.

Secondary antibody: HRP Goat Anti-Rabbit IgG (H+L) (AS014) at 1:10000 dilution.

Lysates/proteins: 25ug per lane.

Blocking buffer: 3% nonfat dry milk in TBST.

Detection: ECL Basic Kit (RM00020).

Exposure time: 10s.