

# LGR5 Rabbit pAb

Catalog No.: A24460

## Basic Information

### Observed MW

102kDa

### Calculated MW

### Category

Primary antibody

### Applications

ELISA, WB, FC

### Cross-Reactivity

Mouse

## Background

The protein encoded by this gene is a leucine-rich repeat-containing receptor (LGR) and member of the G protein-coupled, 7-transmembrane receptor (GPCR) superfamily. The encoded protein is a receptor for R-spondins and is involved in the canonical Wnt signaling pathway. This protein plays a role in the formation and maintenance of adult intestinal stem cells during postembryonic development. Several transcript variants encoding different isoforms have been found for this gene.

## Recommended Dilutions

WB 1:1000 - 1:5000

## Immunogen Information

### Gene ID

8549

### Swiss Prot

O75473

### Immunogen

A synthetic peptide corresponding to a sequence within amino acids 480-580 of human LGR5 (NP\_003658.1).

### Synonyms

FEX; HG38; GPR49; GPR67; GRP49; LGR5

## Contact

 | 400-999-6126

 | [cn.market@abclonal.com.cn](mailto:cn.market@abclonal.com.cn)

 | [www.abclonal.com.cn](http://www.abclonal.com.cn)

## Product Information

### Source

Rabbit

### Isotype

IgG

### Purification

Affinity purification

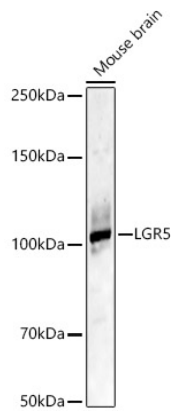
### Storage

Store at -20°C. Avoid freeze / thaw cycles.

Buffer: PBS with 0.09% Sodium azide, 50% glycerol, pH7.3.

## Validation Data

---



Western blot analysis of lysates from Mouse brain, using LGR5 Rabbit pAb (A24460) at 1:2000 dilution.  
Secondary antibody: HRP-conjugated Goat anti-Rabbit IgG (H+L) (AS014) at 1:10000 dilution.  
Lysates/proteins: 25 $\mu$ g per lane.  
Blocking buffer: 3% nonfat dry milk in TBST.  
Detection: ECL Basic Kit (RM00020).  
Exposure time: 45s.