

# p19ARF Rabbit pAb

Catalog No.: A24462

## Basic Information

### Observed MW

17 kDa

### Calculated MW

19 kDa

### Category

Primary antibody

### Applications

WB, ELISA

### Cross-Reactivity

Human

## Background

Enables MDM2/MDM4 family protein binding activity; enzyme inhibitor activity; and protein N-terminus binding activity. Involved in several processes, including negative regulation of lymphocyte proliferation; positive regulation of apoptotic process; and regulation of transcription, DNA-templated. Acts upstream of or within several processes, including negative regulation of cellular protein metabolic process; negative regulation of mammary gland epithelial cell proliferation; and positive regulation of apoptotic process involved in mammary gland involution. Located in cytoplasm and granular component. Part of protein-containing complex. Is expressed in several structures, including bone marrow; central nervous system; dorsal root ganglion; eye; and testis. Human ortholog(s) of this gene implicated in several diseases, including breast cancer (multiple); carcinoma (multiple); hematologic cancer (multiple); melanoma (multiple); and nervous system cancer (multiple). Orthologous to human CDKN2A (cyclin dependent kinase inhibitor 2A).

## Recommended Dilutions

**WB** 1:500 - 1:5000

**ELISA** Recommended starting concentration is 1 µg/mL. Please optimize the concentration based on your specific assay requirements.

## Immunogen Information

### Gene ID

12578

### Swiss Prot

Q64364

### Immunogen

Synthetic peptide. This information is considered to be commercially sensitive.

### Synonyms

Arf; MTS1; Pctr1; p19ARF; p19; ARF-INK4a; INK4a-ARF; Ink4a/Arf;

## Contact

☎ | 400-999-6126

✉ | [cn.market@abclonal.com.cn](mailto:cn.market@abclonal.com.cn)

🌐 | [www.abclonal.com.cn](http://www.abclonal.com.cn)

## Product Information

### Source

Rabbit

### Isotype

IgG

### Purification

Affinity purification

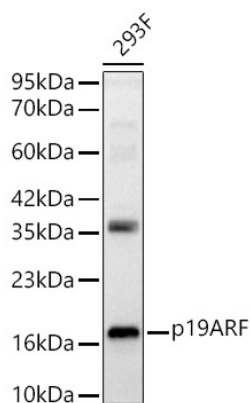
### Storage

Store at -20°C. Avoid freeze / thaw cycles.

Buffer: PBS containing 50% glycerol, preserved with proclin300 or sodium azide (as specified on the Certificate of Analysis), pH 7.3.

## Validation Data

---



Western blot analysis of lysates from 293F cells, using p19ARF Rabbit pAb (A24462) at 1:1000 dilution.  
Secondary antibody: HRP-conjugated Goat anti-Rabbit IgG (H+L) (AS014) at 1:10000 dilution.  
Lysates/proteins: 25µg per lane.  
Blocking buffer: 3% nonfat dry milk in TBST.  
Detection: ECL Basic Kit (RM00020).  
Exposure time: 15s.