

perilipin-2 Rabbit pAb

Catalog No.: A24464

Basic Information

Observed MW

52kDa

Calculated MW

46kDa

Category

Primary antibody

Applications

WB, IHC-P, IF/ICC, ELISA

Cross-Reactivity

Mouse, Rat

Background

Acts upstream of or within lipid storage and long-chain fatty acid transport. Located in several cellular components, including cytosol; lipid droplet; and nucleus. Is expressed in hindlimb tendon and pancreas epithelium. Orthologous to human PLIN2 (perilipin 2).

Recommended Dilutions

WB 1:5000 - 1:20000

IHC-P 1:50 - 1:200

IF/ICC 1:50 - 1:200

ELISA Recommended starting concentration is 1 µg/mL. Please optimize the concentration based on your specific assay requirements.

Immunogen Information

Gene ID

11520

Swiss Prot

P43883

Immunogen

Synthetic peptide. This information is considered to be commercially sensitive.

Synonyms

ADPH; Adfp; Adrp; perilipin-2

Contact

 | 400-999-6126

 | cn.market@abclonal.com.cn

 | www.abclonal.com.cn

Product Information

Source

Rabbit

Isotype

IgG

Purification

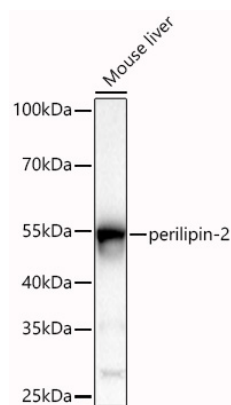
Affinity purification

Storage

Store at -20°C. Avoid freeze / thaw cycles.

Buffer: PBS with 0.09% Sodium azide, 50% glycerol, pH7.3.

Validation Data



Western blot analysis of lysates from Mouse liver using perlipin-2 Rabbit pAb (A24464) at 1:5000 dilution incubated overnight at 4°C.

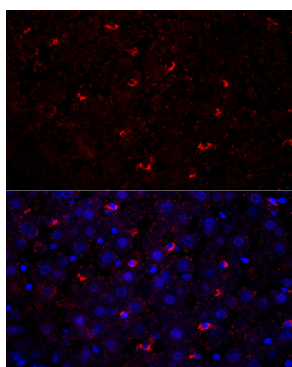
Secondary antibody: HRP-conjugated Goat anti-Rabbit IgG (H+L) (AS014) at 1:10000 dilution.

Lysates/proteins: 25 µg per lane.

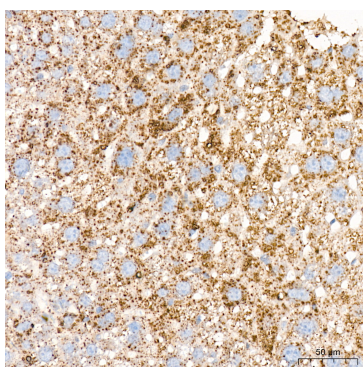
Blocking buffer: 3% nonfat dry milk in TBST.

Detection: ECL Basic Kit (RM00020).

Exposure time: 30s.



Perform high pressure antigen retrieval with 10 mM citrate buffer pH 6.0 before commencing with IF staining protocol. Immunofluorescence analysis of paraffin-embedded rat liver using perlipin-2 Rabbit pAb (A24464) at dilution of 1:200 (40x lens). Secondary antibody: Cy3-conjugated Goat anti-Rabbit IgG (H+L) (AS007) at 1:500 dilution. Blue: DAPI for nuclear staining.



Immunohistochemistry analysis of paraffin-embedded Rat liver tissue using perlipin-2 Rabbit pAb (A24464) at a dilution of 1:100 (40x lens). High pressure antigen retrieval was performed with 0.01M Citrate Buffer (pH 6.0) prior to IHC staining.