

# S-Tag Rabbit pAb

Catalog No.: A24465

## Basic Information

---

### Observed MW

30kDa

### Calculated MW

### Category

Primary antibody

### Applications

ELISA, WB

### Cross-Reactivity

Species independent

## Background

---

S tag is an epitope tag composed of a 15 residue peptide, KETAAKFERQHMS, derived from the pancreatic ribonuclease A.

## Recommended Dilutions

---

WB 1:1000 - 1:5000

## Immunogen Information

---

### Gene ID

Swiss Prot

### Immunogen

A synthesized peptide derived from S-Tag.

### Synonyms

S-Tag; S

## Contact

---

 | 400-999-6126

 | [cn.market@abclonal.com.cn](mailto:cn.market@abclonal.com.cn)

 | [www.abclonal.com.cn](http://www.abclonal.com.cn)

## Product Information

---

### Source

Rabbit

### Isotype

IgG

### Purification

Affinity purification

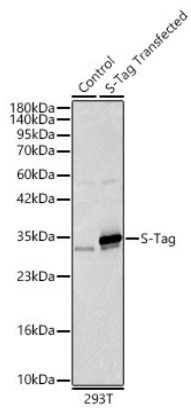
### Storage

Store at -20°C. Avoid freeze / thaw cycles.

Buffer: PBS with 0.05% proclin300, 50% glycerol, pH7.3.

## Validation Data

---



Western blot analysis of lysates from wild type (WT) and 293T transfected with S-Tag using S-Tag Rabbit pAb (A24465) at 1:2000 dilution.

Secondary antibody: HRP-conjugated Goat anti-Rabbit IgG (H+L) (AS014) at 1:10000 dilution.

Lysates/proteins: 25µg per lane.

Blocking buffer: 3% nonfat dry milk in TBST.

Detection: ECL Basic Kit (RM00020).

Exposure time: 1s.