

# GRHL2 Rabbit pAb

Catalog No.: A24468

## Basic Information

### Observed MW

71kDa

### Calculated MW

69kDa/71kDa

### Category

Primary antibody

### Applications

ELISA, WB

### Cross-Reactivity

Human, Rat

## Background

The protein encoded by this gene is a transcription factor that can act as a homodimer or as a heterodimer with either GRHL1 or GRHL3. Defects in this gene are a cause of non-syndromic sensorineural deafness autosomal dominant type 28 (DFNA28).

## Recommended Dilutions

WB 1:500 - 1:1000

## Immunogen Information

### Gene ID

79977

### Swiss Prot

Q6ISB3

### Immunogen

A synthetic peptide corresponding to a sequence within amino acids 110-210 of human GRHL2.

### Synonyms

GRHL2; BOM; DFNA28; ECTDS; TFCP2L3; grainyhead-like protein 2 homolog

## Contact

 | 400-999-6126

 | [cn.market@abclonal.com.cn](mailto:cn.market@abclonal.com.cn)

 | [www.abclonal.com.cn](http://www.abclonal.com.cn)

## Product Information

### Source

Rabbit

### Isotype

IgG

### Purification

Affinity purification

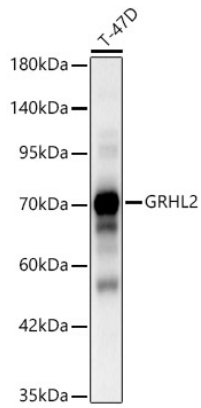
### Storage

Store at -20°C. Avoid freeze / thaw cycles.

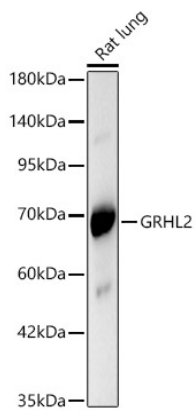
Buffer: PBS with 0.05% proclin300, 50% glycerol, pH7.3.

## Validation Data

---



Western blot analysis of T-47D, using GRHL2 Rabbit pAb (A24468) at 1:1000 dilution.  
Secondary antibody: HRP Goat Anti-Rabbit IgG (H+L) (AS014) at 1:10000 dilution.  
Lysates/proteins: 25ug per lane.  
Blocking buffer: 3% nonfat dry milk in TBST.  
Detection: ECL Basic Kit (RM00020).  
Exposure time: 10s.



Western blot analysis of Rat lung, using GRHL2 Rabbit pAb (A24468) at 1:1000 dilution.  
Secondary antibody: HRP Goat Anti-Rabbit IgG (H+L) (AS014) at 1:10000 dilution.  
Lysates/proteins: 25ug per lane.  
Blocking buffer: 3% nonfat dry milk in TBST.  
Detection: ECL Basic Kit (RM00020).  
Exposure time: 60s.