

PRSS35 Rabbit pAb

Catalog No.: A24469

Basic Information

Observed MW

47kDa

Calculated MW

47kDa

Category

Primary antibody

Applications

ELISA, WB

Cross-Reactivity

Mouse, Rat

Background

Predicted to be located in extracellular region.

Recommended Dilutions

WB 1:1000 - 1:5000

Immunogen Information

Gene ID

167681

Swiss Prot

Q8N3Z0

Immunogen

A synthetic peptide corresponding to a sequence within amino acids 200-300 of human PRSS35 (NP_699193.2).

Synonyms

C6orf158; dj223E3.1

Contact

 | 400-999-6126

 | cn.market@abclonal.com.cn

 | www.abclonal.com.cn

Product Information

Source

Rabbit

Isotype

IgG

Purification

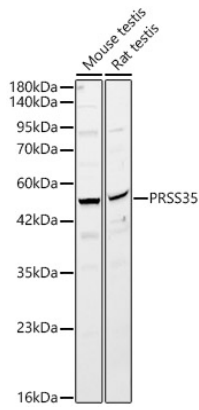
Affinity purification

Storage

Store at -20°C. Avoid freeze / thaw cycles.

Buffer: PBS with 0.05% proclin300, 50% glycerol, pH7.3.

Validation Data



Western blot analysis of various lysates, using PRSS35 Rabbit pAb (A24469) at 1:2000 dilution.
Secondary antibody: HRP Goat Anti-Rabbit IgG (H+L) (AS014) at 1:10000 dilution.
Lysates/proteins: 25ug per lane.
Blocking buffer: 3% nonfat dry milk in TBST.
Detection: ECL Basic Kit (RM00020).
Exposure time: 180s.