

# ZDHHC15 Rabbit pAb

Catalog No.: A24473

## Basic Information

### Observed MW

36kDa

### Calculated MW

17kDa/38kDa/39kDa

### Category

Primary antibody

### Applications

ELISA, WB

### Cross-Reactivity

Human

## Background

The protein encoded by this gene belongs to the DHHC palmitoyltransferase family. Mutations in this gene are associated with mental retardatio X-linked type 91 (MRX91). Alternatively spliced transcript variants encoding different isoforms have been found for this gene.

## Recommended Dilutions

WB 1:500 - 1:1000

## Immunogen Information

### Gene ID

158866

### Swiss Prot

Q96MV8

### Immunogen

A synthetic peptide corresponding to a sequence within amino acids 231-331 of human ZDHHC15 (NP\_659406.1).

### Synonyms

ZDHHC15; DHHC15; MRX91; palmitoyltransferase ZDHHC15

## Contact

 | 400-999-6126

 | [cn.market@abclonal.com.cn](mailto:cn.market@abclonal.com.cn)

 | [www.abclonal.com.cn](http://www.abclonal.com.cn)

## Product Information

### Source

Rabbit

### Isotype

IgG

### Purification

Affinity purification

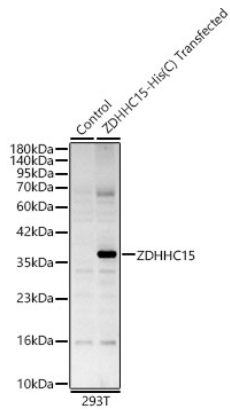
### Storage

Store at -20°C. Avoid freeze / thaw cycles.

Buffer: PBS with 0.05% proclin300, 50% glycerol, pH7.3.

## Validation Data

---



Western blot analysis of lysates from wild type (WT) and 293T cells transfected with ZDHHC15 Rabbit pAb, using ZDHHC15 Rabbit pAb (A24473) at 1:1000 dilution.

Secondary antibody: HRP Goat Anti-Rabbit IgG (H+L) (AS014) at 1:10000 dilution.

Lysates/proteins: 25ug per lane.

Blocking buffer: 3% nonfat dry milk in TBST.

Detection: ECL Basic Kit (RM00020).

Exposure time: 60s.