

GSDMD (Full Length+N terminal) Rabbit pAb

Catalog No.: A24476 **13 Publications**

Basic Information

Observed MW

53 kDa/30-32 kDa

Calculated MW

53kDa/32kDa

Category

Primary antibody

Applications

WB,IF/ICC,IP,ELISA

Cross-Reactivity

Human, Mouse, Rat

Background

Gasdermin D is a member of the gasdermin family. Members of this family appear to play a role in regulation of epithelial proliferation. Gasdermin D has been suggested to act as a tumor suppressor. Alternatively spliced transcript variants have been described.

Recommended Dilutions

WB 1:1000 - 1:5000

IF/ICC 1:50 - 1:200

IP 0.5µg-4µg antibody for
200µg-400µg extracts of
whole cells

ELISA Recommended starting
concentration is 1 µg/mL.
Please optimize the
concentration based on
your specific assay
requirements.

Immunogen Information

Gene ID

69146

Swiss Prot

Q9D8T2

Immunogen

This information is considered to be commercially sensitive.

Synonyms

GSDMD; DF5L; DFNA5L; FKSG10; GSDMDC1; gasdermin-D; GSDMD (Full Length+N terminal)

Contact

 | 400-999-6126

 | cn.market@abclonal.com.cn

 | www.abclonal.com.cn

Product Information

Source

Rabbit

Isotype

IgG

Purification

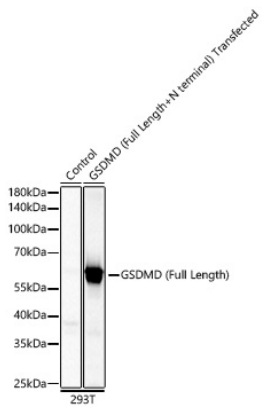
Affinity purification

Storage

Store at -20°C. Avoid freeze / thaw cycles.

Buffer: PBS with 0.09% Sodium azide,50% glycerol,pH7.3.

Validation Data



Western blot analysis of lysates from wild type (WT) and 293T cells transfected with GSDMD (Full Length+N terminal) using GSDMD (Full Length+N terminal) Rabbit pAb (A24476) at 1:1000 dilution incubated overnight at 4°C.
Secondary antibody: HRP-conjugated Goat anti-Rabbit IgG (H+L) (AS014) at 1:10000 dilution.
Lysates/proteins: 20 µg per lane.
Blocking buffer: 3% nonfat dry milk in TBST.
Detection: ECL Basic Kit (RM00020)
.Exposure time: 10s.