

GIF Rabbit pAb

Catalog No.: A24479

Basic Information

Observed MW

55kDa

Calculated MW

42kDa/45kDa

Category

Primary antibody

Applications

ELISA, WB

Cross-Reactivity

Human, Mouse, Rat

Background

This gene is a member of the cobalamin transport protein family. It encodes a glycoprotein secreted by parietal cells of the gastric mucosa and is required for adequate absorption of vitamin B12. Vitamin B12 is necessary for erythrocyte maturation and mutations in this gene may lead to congenital pernicious anemia.

Recommended Dilutions

WB 1:500 - 1:1000

Immunogen Information

Gene ID

2694

Swiss Prot

P27352

Immunogen

Recombinant fusion protein containing a sequence corresponding to amino acids 19-417 of human GIF (NP_005133.2).

Synonyms

GIF; IF; IFMH; INF; TCN3; gastric intrinsic factor

Contact

☎ | 400-999-6126

✉ | cn.market@abclonal.com.cn

🌐 | www.abclonal.com.cn

Product Information

Source

Rabbit

Isotype

IgG

Purification

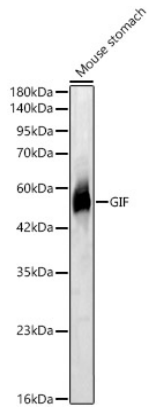
Affinity purification

Storage

Store at -20°C. Avoid freeze / thaw cycles.

Buffer: PBS with 0.05% proclin300, 50% glycerol, pH7.3.

Validation Data



Western blot analysis of Mouse stomach, using GIF Rabbit pAb (A24479) at 1:1000 dilution.
Secondary antibody: HRP Goat Anti-Rabbit IgG (H+L) (AS014) at 1:10000 dilution.
Lysates/proteins: 25ug per lane.
Blocking buffer: 3% nonfat dry milk in TBST.
Detection: ECL Basic Kit (RM00020).
Exposure time: 3s.