

# P2RY11 Rabbit pAb

Catalog No.: A24482

## Basic Information

### Observed MW

Refer to figures

### Calculated MW

40kDa

### Category

Primary antibody

### Applications

ELISA,IF/ICC

### Cross-Reactivity

Human, Mouse

## Background

The product of this gene belongs to the family of G-protein coupled receptors. This family has several receptor subtypes with different pharmacological selectivity, which overlaps in some cases, for various adenosine and uridine nucleotides. This receptor is coupled to the stimulation of the phosphoinositide and adenylyl cyclase pathways and behaves as a selective purinoceptor. Naturally occurring read-through transcripts, resulting from intergenic splicing between this gene and an immediately upstream gene (PPAN, encoding peter pan homolog), have been found. The PPAN-P2RY11 read-through mRNA is ubiquitously expressed and encodes a fusion protein that shares identity with each individual gene product.

## Recommended Dilutions

IF/ICC 1:50 - 1:200

## Immunogen Information

### Gene ID

5032

### Swiss Prot

Q96G91

### Immunogen

A synthetic peptide corresponding to a sequence within amino acids 1-100 of human P2RY11 (NP\_002557.2).

### Synonyms

P2RY11; P2Y11; P2Y purinoceptor 11

## Contact

☎ | 400-999-6126

✉ | [cn.market@abclonal.com.cn](mailto:cn.market@abclonal.com.cn)

🌐 | [www.abclonal.com.cn](http://www.abclonal.com.cn)

## Product Information

### Source

Rabbit

### Isotype

IgG

### Purification

Affinity purification

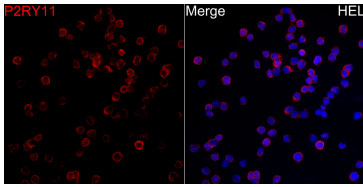
### Storage

Store at -20°C. Avoid freeze / thaw cycles.

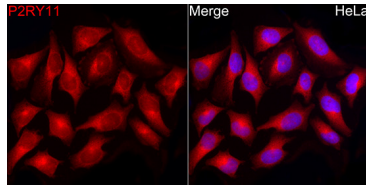
Buffer: PBS with 0.05% proclin300,50% glycerol,pH7.3.

## Validation Data

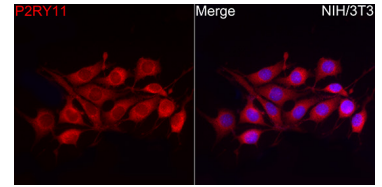
---



Immunofluorescence analysis of HEL cells using P2RY11 Rabbit pAb (A24482) at dilution of 1:100 (40x lens). Blue: DAPI for nuclear staining.



Immunofluorescence analysis of HeLa cells using P2RY11 Rabbit pAb (A24482) at dilution of 1:100 (40x lens). Blue: DAPI for nuclear staining.



Immunofluorescence analysis of NIH/3T3 cells using P2RY11 Rabbit pAb (A24482) at dilution of 1:100 (40x lens). Blue: DAPI for nuclear staining.