

CD105 Rabbit pAb

Catalog No.: A24488

Basic Information

Observed MW

Refer to figures

Calculated MW

70kDa

Category

Primary antibody

Applications

WB, ELISA

Cross-Reactivity

Mouse

Background

Enables protein homodimerization activity and transforming growth factor beta binding activity. Involved in several processes, including circulatory system development; positive regulation of cell differentiation; and regulation of gene expression. Acts upstream of or within circulatory system development and positive regulation of angiogenesis. Located in endothelial microparticle. Is expressed in several structures, including brain; cardiovascular system; extraembryonic vascular system; and lung. Used to study arteriovenous malformations of the brain and hereditary hemorrhagic telangiectasia. Human ortholog(s) of this gene implicated in arteriovenous malformation; arteriovenous malformations of the brain; breast cancer; hereditary hemorrhagic telangiectasia; and intracranial aneurysm. Orthologous to human ENG (endoglin).

Recommended Dilutions

WB 1:1000 - 1:5000

ELISA Recommended starting concentration is 1 µg/mL. Please optimize the concentration based on your specific assay requirements.

Immunogen Information

Gene ID

13805

Swiss Prot

Q63961

Immunogen

Recombinant protein (or fragment). This information is considered to be commercially sensitive.

Synonyms

Endo; CD105; S-endoglin

Contact

☎ | 400-999-6126

✉ | cn.market@abclonal.com.cn

🌐 | www.abclonal.com.cn

Product Information

Source

Rabbit

Isotype

IgG

Purification

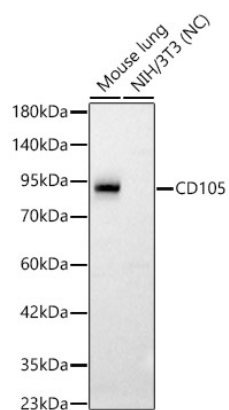
Affinity purification

Storage

Store at -20°C. Avoid freeze / thaw cycles.

Buffer: PBS containing 50% glycerol, preserved with proclin300 or sodium azide (as specified on the Certificate of Analysis), pH 7.3.

Validation Data



Western blot analysis of various lysates, using CD105 Rabbit pAb (A24488) at 1:2000 dilution.
Secondary antibody: HRP-conjugated Goat anti-Rabbit IgG (H+L) (AS014) at 1:10000 dilution.
Lysates/proteins: 25µg per lane.
Blocking buffer: 3% nonfat dry milk in TBST.
Detection: ECL Basic Kit (RM00020).
Negative control (NC): NIH/3T3
Exposure time: 5s.