

MAdCAM-1 Rabbit pAb

Catalog No.: A24489

Basic Information

Observed MW

60kDa

Calculated MW

43kDa

Category

Primary antibody

Applications

ELISA, WB

Cross-Reactivity

Mouse

Background

Predicted to enable integrin binding activity involved in cell-matrix adhesion. Acts upstream of or within keratinocyte differentiation and leukocyte migration. Predicted to be located in membrane. Predicted to be integral component of membrane. Is expressed in eyelid; hair follicle; and hemolymphoid system. Orthologous to human MADCAM1 (mucosal vascular addressin cell adhesion molecule 1).

Recommended Dilutions

WB 1:500 - 1:1000

Immunogen Information

Gene ID

17123

Swiss Prot

Q61826

Immunogen

Recombinant fusion protein containing a sequence corresponding to amino acids 22-109 of mouse MAdCAM-1 (NP_038619.2).

Synonyms

MAdCAM-1

Contact

☎ | 400-999-6126

✉ | cn.market@abclonal.com.cn

🌐 | www.abclonal.com.cn

Product Information

Source

Rabbit

Isotype

IgG

Purification

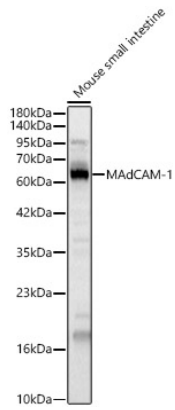
Affinity purification

Storage

Store at -20°C. Avoid freeze / thaw cycles.

Buffer: PBS with 0.05% proclin300, 50% glycerol, pH7.3.

Validation Data



Western blot analysis of Mouse small intestine, using MAdCAM-1 Rabbit pAb (A24489) at 1:700 dilution.
Secondary antibody: HRP Goat Anti-Rabbit IgG (H+L) (AS014) at 1:10000 dilution.
Lysates/proteins: 25ug per lane.
Blocking buffer: 3% nonfat dry milk in TBST.
Detection: ECL Basic Kit (RM00020).
Exposure time: 60s.