

# IRF3 Rabbit pAb

Catalog No.: A2449 **1 Publications**

## Basic Information

**Observed MW**

47kDa

**Calculated MW**

47kDa

**Category**

Primary antibody

**Applications**

WB,IP,FC

**Cross-Reactivity**

Human

## Background

This gene encodes a member of the interferon regulatory transcription factor (IRF) family. The encoded protein is found in an inactive cytoplasmic form that upon serine/threonine phosphorylation forms a complex with CREBBP. This complex translocates to the nucleus and activates the transcription of interferons alpha and beta, as well as other interferon-induced genes. The protein plays an important role in the innate immune response against DNA and RNA viruses. Mutations in this gene are associated with Encephalopathy, acute, infection-induced, herpes-specific, 7.

## Recommended Dilutions

<b>WB</b>	1:500 - 1:2000
<b>IP</b>	1:20 - 1:50
<b>FC</b>	1:10 - 1:50

## Immunogen Information

**Gene ID**

3661

**Swiss Prot**

Q14653

**Immunogen**

A synthetic peptide of human IRF3

**Synonyms**

IIAE7; IRF3

## Contact

 | 400-999-6126 | [cn.market@abclonal.com.cn](mailto:cn.market@abclonal.com.cn) | [www.abclonal.com.cn](http://www.abclonal.com.cn)

## Product Information

**Source**

Rabbit

**Isotype**

IgG

**Purification**

Affinity purification

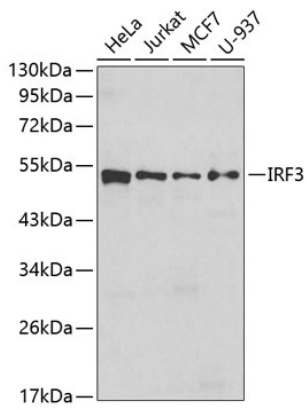
**Storage**

Store at -20°C. Avoid freeze / thaw cycles.

Buffer: PBS with 0.02% sodium azide,50% glycerol,pH7.3.

## Validation Data

---



Western blot analysis of various lysates using IRF3 Rabbit pAb (A2449).  
Secondary antibody: HRP-conjugated Goat anti-Rabbit IgG (H+L) (AS014) at 1:10000 dilution.  
Lysates/proteins: 25µg per lane.  
Blocking buffer: 3% nonfat dry milk in TBST.