

TIM-1/KIM-1/HAVCR Rabbit pAb

Catalog No.: A24493

Basic Information

Observed MW

50kDa

Calculated MW

33kDa

Category

Primary antibody

Applications

WB, ELISA

Cross-Reactivity

Human

Background

Enables phosphatidylserine binding activity. Acts upstream of or within positive regulation of mast cell activation; response to lipopolysaccharide; and response to wounding. Located in brush border and cell surface. Is expressed in brain; dorsal aorta; liver; lung; and reproductive system. Human ortholog(s) of this gene implicated in atopic dermatitis. Orthologous to human HAVCR1 (hepatitis A virus cellular receptor 1).

Recommended Dilutions

WB 1:2000 - 1:8000

ELISA Recommended starting concentration is 1 µg/mL. Please optimize the concentration based on your specific assay requirements.

Immunogen Information

Gene ID

171283

Swiss Prot

Q5QNS5

Immunogen

Recombinant protein (or fragment). This information is considered to be commercially sensitive.

Synonyms

Tim1; KIM-1; TIM-1; Timd1; TIM-1/KIM-1/HAVCR

Contact

☎ | 400-999-6126

✉ | cn.market@abclonal.com.cn

🌐 | www.abclonal.com.cn

Product Information

Source

Rabbit

Isotype

IgG

Purification

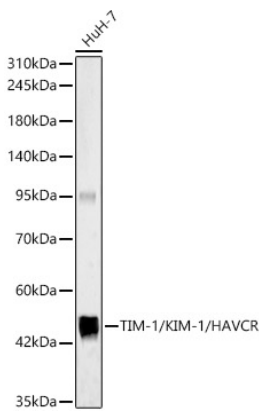
Affinity purification

Storage

Store at -20°C. Avoid freeze / thaw cycles.

Buffer: PBS containing 50% glycerol, preserved with proclin300 or sodium azide (as specified on the Certificate of Analysis), pH 7.3.

Validation Data



Western blot analysis of lysates from HuH-7 cells, using TIM-1/KIM-1/HAVCR Rabbit pAb (A24493) at 1:7000 dilution.
Secondary antibody: HRP-conjugated Goat anti-Rabbit IgG (H+L) (AS014) at 1:10000 dilution.
Lysates/proteins: 25µg per lane.
Blocking buffer: 3% nonfat dry milk in TBST.
Detection: ECL Basic Kit (RM00020).
Exposure time: 180s.