

# Rat C-Reactive Protein/CRP Rabbit pAb

Catalog No.: A24504

## Basic Information

### Observed MW

27kDa

### Calculated MW

25kDa

### Category

Primary antibody

### Applications

ELISA, WB

### Cross-Reactivity

Rat

## Background

Enables cholesterol binding activity; identical protein binding activity; and low-density lipoprotein particle binding activity. Involved in several processes, including cellular response to nitric oxide; complement activation, classical pathway; and negative regulation of superoxide anion generation. Located in extracellular space; filopodium; and growth cone. Used to study rheumatoid arthritis. Biomarker of several diseases, including acute kidney failure; artery disease (multiple); iron deficiency anemia; obesity; and status epilepticus. Human ortholog(s) of this gene implicated in several diseases, including Kawasaki disease; autoimmune disease (multiple); macular degeneration (multiple); middle cerebral artery infarction; and nephritis (multiple). Orthologous to human CRP (C-reactive protein).

## Recommended Dilutions

WB 1:1000 - 1:5000

## Immunogen Information

### Gene ID

25419

### Swiss Prot

P48199

### Immunogen

Recombinant fusion protein containing a sequence corresponding to amino acids 20-230 of rat C-Reactive Protein/CRP (NP\_058792.1).

### Synonyms

Aa1249; Ac1262; Ab1-341; Ab2-196; Ac1-114; Ac2-069; Ba2-693; Rat C-Reactive Protein/CRP

## Contact

☎ | 400-999-6126

✉ | [cn.market@abclonal.com.cn](mailto:cn.market@abclonal.com.cn)

🌐 | [www.abclonal.com.cn](http://www.abclonal.com.cn)

## Product Information

### Source

Rabbit

### Isotype

IgG

### Purification

Affinity purification

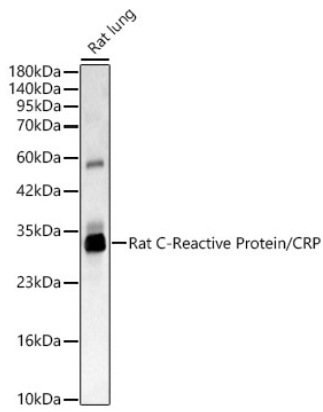
### Storage

Store at -20°C. Avoid freeze / thaw cycles.

Buffer: PBS with 0.05% proclin300, 50% glycerol, pH7.3.

## Validation Data

---



Western blot analysis of Rat lung, using Rat C-Reactive Protein/CRP Rabbit pAb (A24504) at 1:2000 dilution.

Secondary antibody: HRP Goat Anti-Rabbit IgG (H+L) (AS014) at 1:10000 dilution.

Lysates/proteins: 25ug per lane.

Blocking buffer: 3% nonfat dry milk in TBST.

Detection: ECL Basic Kit (RM00020).

Exposure time: 10s.