

SETD1B Rabbit pAb

Catalog No.: A24505

Basic Information

Observed MW

Refer to figures

Calculated MW

208kDa/212kDa

Category

Primary antibody

Applications

ELISA,IHC-P

Cross-Reactivity

Mouse

Background

SET1B is a component of a histone methyltransferase complex that produces trimethylated histone H3 at Lys4 (Lee et al., 2007 [PubMed 17355966]).[supplied by OMIM, Mar 2008]

Recommended Dilutions

IHC-P 1:50 - 1:200

Immunogen Information

Gene ID

23067

Swiss Prot

Q9UPS6

Immunogen

A synthetic peptide corresponding to a sequence within amino acids 150-250 of human SETD1B (NP_001340274.1).

Synonyms

SETD1B; KMT2G; Set1B; SET domain containing 1B

Contact

 | 400-999-6126

 | cn.market@abclonal.com.cn

 | www.abclonal.com.cn

Product Information

Source

Rabbit

Isotype

IgG

Purification

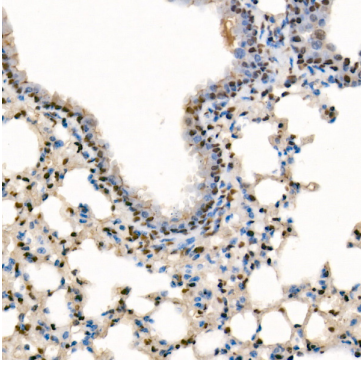
Affinity purification

Storage

Store at -20°C. Avoid freeze / thaw cycles.

Buffer: PBS with 0.05% proclin300,50% glycerol,pH7.3.

Validation Data



Immunohistochemistry analysis of paraffin-embedded mouse lung using SETD1B Rabbit pAb (A24505) at dilution of 1:100 (40x lens). Perform high pressure antigen retrieval with 10 mM citrate buffer pH 6.0 before commencing with IHC staining protocol.