

# GTF2IRD1 Rabbit pAb

Catalog No.: A24506

## Basic Information

### Observed MW

130kDa

### Calculated MW

104kDa/106kDa/107kDa

### Category

Primary antibody

### Applications

ELISA, WB

### Cross-Reactivity

Rat

## Background

The protein encoded by this gene contains five GTF2I-like repeats and each repeat possesses a potential helix-loop-helix (HLH) motif. It may have the ability to interact with other HLH-proteins and function as a transcription factor or as a positive transcriptional regulator under the control of Retinoblastoma protein. This gene plays a role in craniofacial and cognitive development and mutations have been associated with Williams-Beuren syndrome, a multisystem developmental disorder caused by deletion of multiple genes at 7q11.23. Alternative splicing results in multiple transcript variants.

## Recommended Dilutions

WB 1:100 - 1:500

## Immunogen Information

### Gene ID

9569

### Swiss Prot

Q9UHL9

### Immunogen

Recombinant fusion protein containing a sequence corresponding to amino acids 660-890 of human GTF2IRD1 (NP\_057412.1).

### Synonyms

GTF2IRD1; BEN; CREAM1; GTF3; MUSTRD1; RBAP2; WBS; WBSR11; WBSR12; hMusTRD1alpha1; GTF2I repeat domain containing 1

## Contact

☎ | 400-999-6126

✉ | [cn.market@abclonal.com.cn](mailto:cn.market@abclonal.com.cn)

🌐 | [www.abclonal.com.cn](http://www.abclonal.com.cn)

## Product Information

### Source

Rabbit

### Isotype

IgG

### Purification

Affinity purification

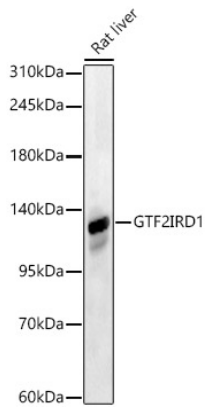
### Storage

Store at -20°C. Avoid freeze / thaw cycles.

Buffer: PBS with 0.05% proclin300, 50% glycerol, pH7.3.

## Validation Data

---



Western blot analysis of Rat liver, using GTF2IRD1 Rabbit pAb (A24506) at 1:400 dilution.  
Secondary antibody: HRP Goat Anti-Rabbit IgG (H+L) (AS014) at 1:10000 dilution.  
Lysates/proteins: 25ug per lane.  
Blocking buffer: 3% nonfat dry milk in TBST.  
Detection: ECL Basic Kit (RM00020).  
Exposure time: 60s.