

# TMEM176B Rabbit pAb

Catalog No.: A24509

## Basic Information

### Observed MW

25kDa

### Calculated MW

25kDa/29kDa

### Category

Primary antibody

### Applications

ELISA, WB

### Cross-Reactivity

Human, Mouse

## Background

TMEM176B (transmembrane protein 176B) is a protein-coding gene. An important paralog of this gene is TMEM176A.

## Recommended Dilutions

WB 1:1000 - 1:5000

## Immunogen Information

### Gene ID

28959

### Swiss Prot

Q3YBM2

### Immunogen

Recombinant fusion protein containing a sequence corresponding to amino acids 1-65 of human TMEM176B (NP\_001094781.1).

### Synonyms

TMEM176B; LR8; MS4B2; transmembrane protein 176B

## Contact

 | 400-999-6126

 | [cn.market@abclonal.com.cn](mailto:cn.market@abclonal.com.cn)

 | [www.abclonal.com.cn](http://www.abclonal.com.cn)

## Product Information

### Source

Rabbit

### Isotype

IgG

### Purification

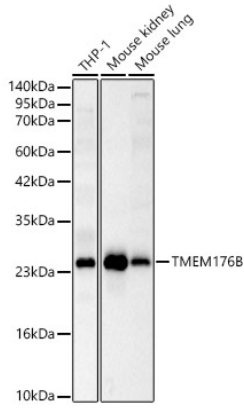
Affinity purification

### Storage

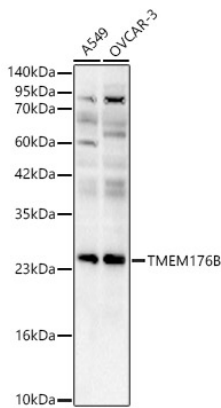
Store at -20°C. Avoid freeze / thaw cycles.

Buffer: PBS with 0.05% proclin300, 50% glycerol, pH7.3.

## Validation Data



Western blot analysis of various lysates, using TMEM176B Rabbit pAb (A24509) at 1:2000 dilution.  
Secondary antibody: HRP Goat Anti-Rabbit IgG (H+L) (AS014) at 1:10000 dilution.  
Lysates/proteins: 25ug per lane.  
Blocking buffer: 3% nonfat dry milk in TBST.  
Detection: ECL Basic Kit (RM00020).  
Exposure time: 45s.



Western blot analysis of various lysates, using TMEM176B Rabbit pAb (A24509) at 1:2000 dilution.  
Secondary antibody: HRP Goat Anti-Rabbit IgG (H+L) (AS014) at 1:10000 dilution.  
Lysates/proteins: 25ug per lane.  
Blocking buffer: 3% nonfat dry milk in TBST.  
Detection: ECL Basic Kit (RM00020).  
Exposure time: 90s.