

# TNF RII/TNFRSF1B/CD120b Rabbit pAb

Catalog No.: A24513

## Basic Information

### Observed MW

50kDa

### Calculated MW

50kDa

### Category

Primary antibody

### Applications

ELISA,WB

### Cross-Reactivity

Human, Mouse

## Background

Enables tumor necrosis factor-activated receptor activity. Involved in several processes, including negative regulation of extracellular matrix constituent secretion; regulation of nervous system development; and semi-lunar valve development. Acts upstream of or within several processes, including RNA destabilization; apoptotic signaling pathway; and negative regulation of inflammatory response. Located in membrane raft. Is expressed in several structures, including blood; dorsal aorta; extraembryonic component; genitourinary system; and liver. Human ortholog(s) of this gene implicated in several diseases, including Parkinsonism; acne; bone disease (multiple); glomerulonephritis (multiple); and lung disease (multiple). Orthologous to human TNFRSF1B (TNF receptor superfamily member 1B).

## Recommended Dilutions

WB 1:1000 - 1:5000

## Immunogen Information

### Gene ID

21938

### Swiss Prot

P25119

### Immunogen

Recombinant Protein corresponding to a sequence within amino acids 23-258 of mouse TNF RII/TNFRSF1B/CD120b(NP\_035740.2).

### Synonyms

p75; TNFBR; Tnfr2; CD120b; TNF-R2; TNFR80; TNFR11; Tnfr-1; TNF-R75; TNF-R-II; TNF-alphaR2; TNFalpha-R2; TNF RII/TNFRSF1B/CD120b

## Contact

☎ | 400-999-6126

✉ | [cn.market@abclonal.com.cn](mailto:cn.market@abclonal.com.cn)

🌐 | [www.abclonal.com.cn](http://www.abclonal.com.cn)

## Product Information

### Source

Rabbit

### Isotype

IgG

### Purification

Affinity purification

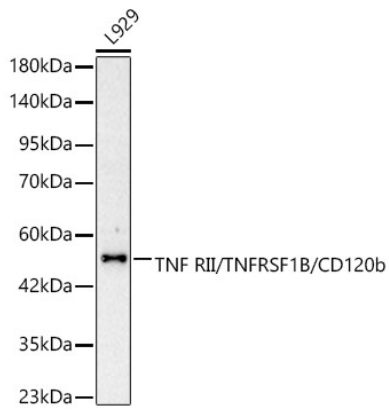
### Storage

Store at -20°C. Avoid freeze / thaw cycles.

Buffer: PBS with 0.05% proclin300,50% glycerol,pH7.3.

## Validation Data

---



Western blot analysis of lysates from L929 cells using TNF RII/TNFRSF1B/CD120b Rabbit pAb (A24513) at 1:2000 dilution.

Secondary antibody: HRP-conjugated Goat anti-Rabbit IgG (H+L) (AS014) at 1:10000 dilution.

Lysates/proteins: 25 µg per lane.

Blocking buffer: 3% nonfat dry milk in TBST.

Detection: ECL Basic Kit (RM00020).

Exposure time: 1s.