

C1qa Rabbit pAb

Catalog No.: A24519 **1 Publications**

Basic Information

Observed MW

30kDa/

Calculated MW

26kDa

Category

Primary antibody

Applications

WB,IHC-P,IF/ICC,ELISA

Cross-Reactivity

Human, Mouse, Rat

Background

Involved in several processes, including complement-mediated synapse pruning; microglial cell activation; and nervous system development. Acts upstream of or within complement activation, classical pathway. Located in postsynapse. Is expressed in brain; foot; genitourinary system; and pancreas. Used to study epilepsy and systemic lupus erythematosus. Human ortholog(s) of this gene implicated in glomerulonephritis. Orthologous to human C1QA (complement C1q A chain).

Recommended Dilutions

WB	1:1000 - 1:5000
IHC-P	1:500 - 1:1000
IF/ICC	1:100 - 1:500
ELISA	Recommended starting concentration is 1 µg/mL. Please optimize the concentration based on your specific assay requirements.

Contact

	400-999-6126
	cn.market@abclonal.com.cn
	www.abclonal.com.cn

Immunogen Information

Gene ID

12259

Swiss Prot

P98086

Immunogen

Recombinant protein (or fragment). This information is considered to be commercially sensitive.

Synonyms

C1q; Adic; C1qa

Product Information

Source

Rabbit

Isotype

IgG

Purification

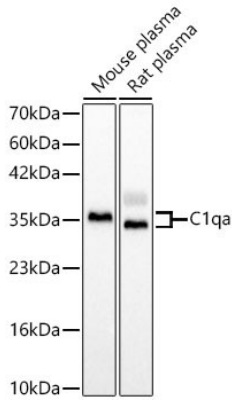
Affinity purification

Storage

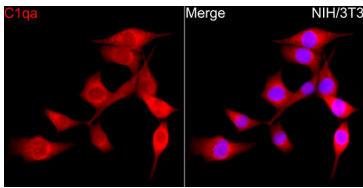
Store at -20°C. Avoid freeze / thaw cycles.

Buffer: PBS containing 50% glycerol, preserved with proclin300 or sodium azide (as specified on the Certificate of Analysis), pH 7.3.

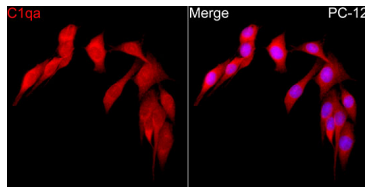
Validation Data



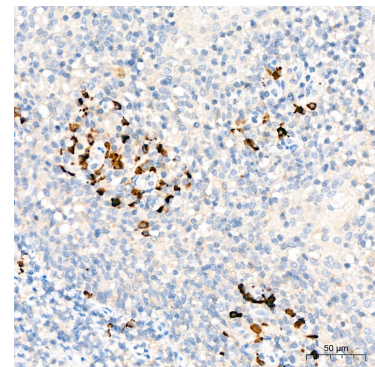
Western blot analysis of various lysates using C1qa Rabbit pAb (A24519) at 1:2000 dilution. Secondary antibody: HRP-conjugated Goat anti-Rabbit IgG (H+L) (AS014) at 1:10000 dilution. Lysates / proteins: 25 µg per lane. Blocking buffer: 3 % nonfat dry milk in TBST. Detection: ECL Basic Kit (RM00020). Exposure time: 1s.



Immunofluorescence analysis of NIH/3T3 cells using C1qa Rabbit pAb (A24519) at dilution of 1:300 (40x lens). Secondary antibody: Cy3-conjugated Goat anti-Rabbit IgG (H+L) (AS007) at 1:500 dilution. Blue: DAPI for nuclear staining.



Immunofluorescence analysis of PC-12 cells using C1qa Rabbit pAb (A24519) at dilution of 1:300 (40x lens). Secondary antibody: Cy3-conjugated Goat anti-Rabbit IgG (H+L) (AS007) at 1:500 dilution. Blue: DAPI for nuclear staining.



Immunohistochemistry analysis of paraffin-embedded Human tonsil tissue using C1qa Rabbit pAb (A24519) at a dilution of 1:800 (40x lens). High pressure antigen retrieval was performed with 0.01 M citrate buffer (pH 6.0) prior to IHC staining.