

KIAA1456 Rabbit pAb

Catalog No.: A24520

Basic Information

Observed MW

51kDa

Calculated MW

14kDa

Category

Primary antibody

Applications

ELISA, WB, IHC-P, IF/ICC

Cross-Reactivity

Human, Mouse, Rat

Background

Enables tRNA methyltransferase activity. Predicted to be involved in tRNA wobble uridine modification. Predicted to be active in cytoplasm and nucleus.

Recommended Dilutions

WB	1:1000 - 1:5000
IHC-P	1:50 - 1:200
IF/ICC	1:50 - 1:200

Immunogen Information

Gene ID

57604

Swiss Prot

Q9P272

Immunogen

A synthetic peptide corresponding to a sequence within amino acids 150-250 of human KIAA1456 (NP_065895.2).

Synonyms

KIAA1456; C8orf79; TRM9L

Contact

☎ | 400-999-6126

✉ | cn.market@abclonal.com.cn

🌐 | www.abclonal.com.cn

Product Information

Source

Rabbit

Isotype

IgG

Purification

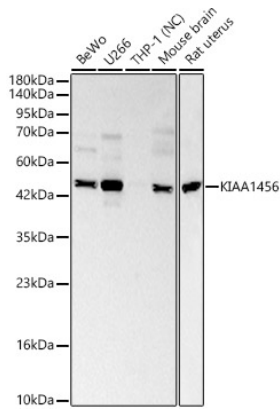
Affinity purification

Storage

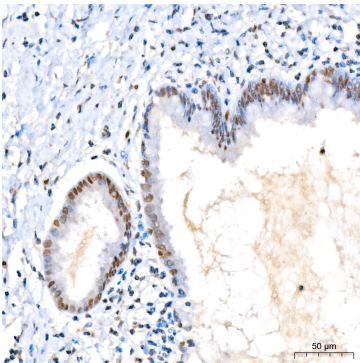
Store at -20°C. Avoid freeze / thaw cycles.

Buffer: PBS with 0.05% proclin300, 50% glycerol, pH7.3.

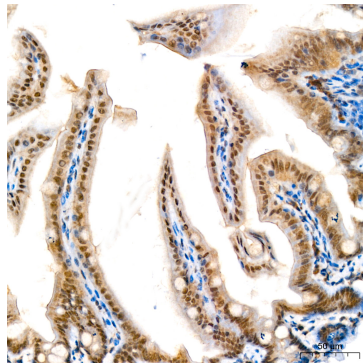
Validation Data



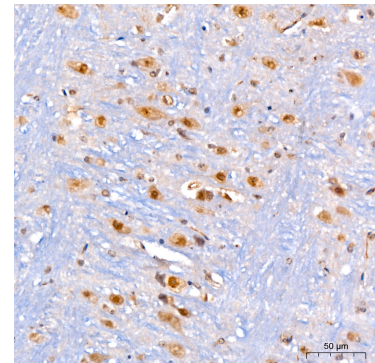
Western blot analysis of various lysates using KIAA1456 Rabbit pAb (A24520) at 1:2000 dilution. Secondary antibody: HRP Goat Anti-Rabbit IgG (H+L) (AS014) at 1:10000 dilution. Lysates/proteins: 25 µg per lane. Blocking buffer: 3% nonfat dry milk in TBST. Detection: ECL Basic Kit (RM00020). Negative control (NC): THP-1. Exposure time: 5s.



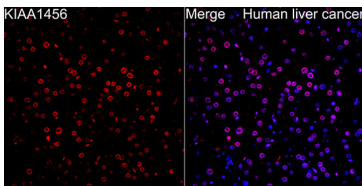
Immunohistochemistry analysis of KIAA1456 in paraffin-embedded Human cervix tissue using KIAA1456 Rabbit pAb (A24520) at a dilution of 1:200 (40x lens). High pressure antigen retrieval was performed with 0.01 M citrate buffer (pH 6.0) prior to IHC staining.



Immunohistochemistry analysis of KIAA1456 in paraffin-embedded Mouse intestin tissue using KIAA1456 Rabbit pAb (A24520) at a dilution of 1:200 (40x lens). High pressure antigen retrieval was performed with 0.01 M citrate buffer (pH 6.0) prior to IHC staining.



Immunohistochemistry analysis of KIAA1456 in paraffin-embedded Rat brain tissue using KIAA1456 Rabbit pAb (A24520) at a dilution of 1:200 (40x lens). High pressure antigen retrieval was performed with 0.01 M citrate buffer (pH 6.0) prior to IHC staining.



Immunofluorescence analysis of human liver cancer cells using KIAA1456 Rabbit pAb (A24520) at dilution of 1:200 (40x lens). Perform high pressure antigen retrieval with 10 mM citrate buffer pH 6.0 before commencing with IF staining protocol. Secondary antibody: Cy3 Goat Anti-Rabbit IgG (H+L) (AS007) at 1:500 dilution. Blue: DAPI for nuclear staining.