

# IL6 Rabbit pAb

Catalog No.: A24522 **1 Publications**

## Basic Information

### Observed MW

25-35kDa

### Calculated MW

24kDa

### Category

Primary antibody

### Applications

WB,ELISA

### Cross-Reactivity

Mouse

## Background

This gene encodes a member of the interleukin family of cytokines that have important functions in immune response, hematopoiesis, inflammation and the acute phase response. The ectopic overexpression of the encoded protein in mice results in excessive plasma cells in circulation, leading to death. Mice lacking the encoded protein exhibit abnormalities in hepatic acute phase response, some immune mechanisms, bone resorption in response to estrogen, liver regeneration and wound healing. Alternative splicing results in multiple transcript variants encoding different isoforms.

## Recommended Dilutions

**WB** 1:500 - 1:1000

**ELISA** Recommended starting concentration is 1 µg/mL. Please optimize the concentration based on your specific assay requirements.

## Immunogen Information

### Gene ID

16193

### Swiss Prot

P08505

### Immunogen

Recombinant fusion protein containing a sequence corresponding to amino acids 25-211 of mouse IL6 (NP\_112445.1).

### Synonyms

IL-6; IL6

## Contact

 | 400-999-6126

 | [cn.market@abclonal.com.cn](mailto:cn.market@abclonal.com.cn)

 | [www.abclonal.com.cn](http://www.abclonal.com.cn)

## Product Information

### Source

Rabbit

### Isotype

IgG

### Purification

Affinity purification

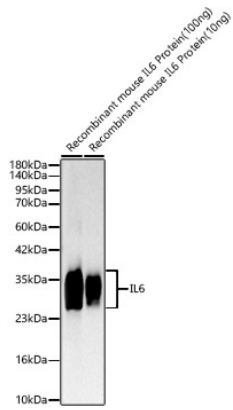
### Storage

Store at -20°C. Avoid freeze / thaw cycles.

Buffer: PBS with 0.09% Sodium azide,50% glycerol,pH7.3.

## Validation Data

---



Western blot analysis of recombinant mouse IL6 Protein, using IL6 Rabbit pAb (A24522) at 1:400 dilution.  
Secondary antibody: HRP-conjugated Goat anti-Rabbit IgG (H+L) (AS014) at 1:10000 dilution.  
Lysates/proteins: 100ng/100ng per lane.  
Blocking buffer: 3% nonfat dry milk in TBST.  
Detection: ECL Basic Kit (RM00020).  
Exposure time: 10s.