

GPVI/GP6 Rabbit pAb

Catalog No.: A24524

Basic Information

Observed MW

60kDa

Calculated MW

34kDa

Category

Primary antibody

Applications

WB, ELISA

Cross-Reactivity

Human

Background

Enables collagen binding activity and collagen receptor activity. Involved in vasculature development. Acts upstream of or within collagen-activated tyrosine kinase receptor signaling pathway. Is integral component of plasma membrane. Is expressed in bone marrow; femur; liver; and spleen. Human ortholog(s) of this gene implicated in platelet-type bleeding disorder 11. Orthologous to human GP6 (glycoprotein VI platelet).

Recommended Dilutions

WB 1:1000 - 1:5000

ELISA Recommended starting concentration is 1 µg/mL. Please optimize the concentration based on your specific assay requirements.

Immunogen Information

Gene ID

243816

Swiss Prot

P0C191

Immunogen

Recombinant protein (or fragment). This information is considered to be commercially sensitive.

Synonyms

Gpvi; Gm469; 9830166G18Rik; GPVI/GP6

Contact

☎ | 400-999-6126

✉ | cn.market@abclonal.com.cn

🌐 | www.abclonal.com.cn

Product Information

Source

Rabbit

Isotype

IgG

Purification

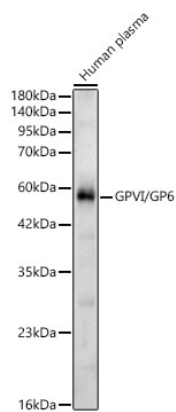
Affinity purification

Storage

Store at -20°C. Avoid freeze / thaw cycles.

Buffer: PBS containing 50% glycerol, preserved with proclin300 or sodium azide (as specified on the Certificate of Analysis), pH 7.3.

Validation Data



Western blot analysis of lysates from Human plasma, using GPVI/GP6 Rabbit pAb (A24524) at 1:2000 dilution.
Secondary antibody: HRP-conjugated Goat anti-Rabbit IgG (H+L) (AS014) at 1:10000 dilution.
Lysates/proteins: 25µg per lane.
Blocking buffer: 3% nonfat dry milk in TBST.
Detection: ECL Basic Kit (RM00020).
Exposure time: 90s.