

# RNF149 Rabbit pAb

Catalog No.: A24526

## Basic Information

### Observed MW

Refer to figures

### Calculated MW

43kDa

### Category

Primary antibody

### Applications

ELISA,IF/ICC

### Cross-Reactivity

Human, Rat

## Background

Predicted to enable ubiquitin protein ligase activity. Predicted to be involved in ubiquitin-dependent protein catabolic process. Predicted to act upstream of or within cellular response to xenobiotic stimulus; negative regulation of MAPK cascade; and regulation of protein stability. Located in membrane.

## Recommended Dilutions

IF/ICC 1:50 - 1:200

## Immunogen Information

### Gene ID

284996

### Swiss Prot

Q8NC42

### Immunogen

A synthetic peptide corresponding to a sequence within amino acids 200-300 of human RNF149(NP\_775918.2).

### Synonyms

RNF149; DNATP2; ring finger protein 149

## Contact

☎ | 400-999-6126

✉ | [cn.market@abclonal.com.cn](mailto:cn.market@abclonal.com.cn)

🌐 | [www.abclonal.com.cn](http://www.abclonal.com.cn)

## Product Information

### Source

Rabbit

### Isotype

IgG

### Purification

Affinity purification

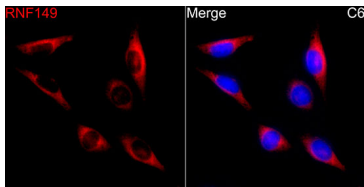
### Storage

Store at -20°C. Avoid freeze / thaw cycles.

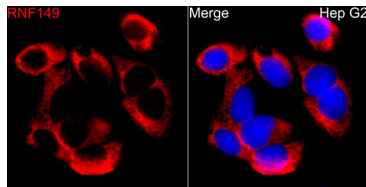
Buffer: PBS with 0.05% proclin300,50% glycerol,pH7.3.

## Validation Data

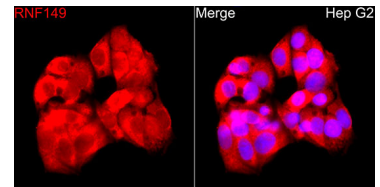
---



Immunofluorescence analysis of C6 cells using RNF149 Rabbit pAb (A24526) at dilution of 1:100 (40x lens). Secondary antibody: Cy3 Goat Anti-Rabbit IgG (H+L) (AS007) at 1:500 dilution. Blue: DAPI for nuclear staining.



Immunofluorescence analysis of Hep G2 cells using RNF149 Rabbit pAb (A24526) at dilution of 1:100 (40x lens). Secondary antibody: Cy3 Goat Anti-Rabbit IgG (H+L) (AS007) at 1:500 dilution. Blue: DAPI for nuclear staining.



Immunofluorescence analysis of HepG2 cells using RNF149 Rabbit pAb (A24526) at dilution of 1:100 (40x lens). Secondary antibody: Cy3 Goat Anti-Rabbit IgG (H+L) (AS007) at 1:500 dilution. Blue: DAPI for nuclear staining.