

# LRRFIP1 Rabbit pAb

Catalog No.: A24530

## Basic Information

### Observed MW

70kDa

### Calculated MW

89kDa

### Category

Primary antibody

### Applications

ELISA, WB

### Cross-Reactivity

Human, Mouse, Rat

## Background

Enables DNA-binding transcription repressor activity, RNA polymerase II-specific; RNA polymerase II cis-regulatory region sequence-specific DNA binding activity; and protein homodimerization activity. Involved in negative regulation of transcription by RNA polymerase II. Located in cytosol and plasma membrane.

## Recommended Dilutions

WB 1:1000 - 1:5000

## Immunogen Information

### Gene ID

9208

### Swiss Prot

Q32MZ4

### Immunogen

Recombinant fusion protein containing a sequence corresponding to amino acids 589-809 of human LRRFIP1 (NP\_001131024.1).

### Synonyms

GCF2; TRIP; FLAP1; GCF-2; FLAP-1; HUF1-1; FLIAP1; LRRFIP1

## Contact

 | 400-999-6126

 | [cn.market@abclonal.com.cn](mailto:cn.market@abclonal.com.cn)

 | [www.abclonal.com.cn](http://www.abclonal.com.cn)

## Product Information

### Source

Rabbit

### Isotype

IgG

### Purification

Affinity purification

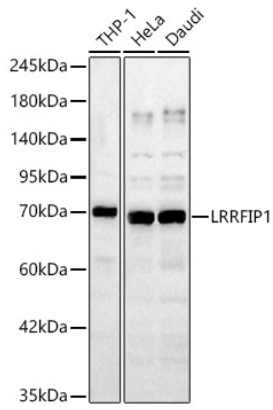
### Storage

Store at -20°C. Avoid freeze / thaw cycles.

Buffer: PBS with 0.05% proclin300, 50% glycerol, pH7.3.

## Validation Data

---



Western blot analysis of various lysates, using LRRFIP1 Rabbit pAb (A24530) at 1:1000 dilution.  
Secondary antibody: HRP Goat Anti-Rabbit IgG (H+L) (AS014) at 1:10000 dilution.  
Lysates/proteins: 25ug per lane.  
Blocking buffer: 3% nonfat dry milk in TBST.  
Detection: ECL Basic Kit (RM00020).  
Exposure time: 45s.