

Mouse Mpo Rabbit pAb

Catalog No.: A24531 **5 Publications**

Basic Information

Observed MW

Calculated MW

81kDa

Category

Primary antibody

Applications

WB,IF-P,IHC-P,ELISA

Cross-Reactivity

Human, Mouse, Rat

Background

Enables peroxidase activity. Acts upstream of or within several processes, including hypochlorous acid biosynthetic process; removal of superoxide radicals; and response to fungus. Located in mitochondrion. Is expressed in several structures, including alimentary system; genitourinary system; hemolymphoid system; integumental system; and skeleton. Human ortholog(s) of this gene implicated in several diseases, including Alzheimer's disease 1; cystic fibrosis; kidney failure (multiple); liver disease (multiple); and lung disease (multiple). Orthologous to human MPO (myeloperoxidase).

Recommended Dilutions

WB 1:500 - 1:1000

IF-P 1:50 - 1:200

IHC-P 1:50 - 1:200

ELISA Recommended starting concentration is 1 µg/mL. Please optimize the concentration based on your specific assay requirements.

Immunogen Information

Gene ID

17523

Swiss Prot

P11247

Immunogen

Recombinant protein (or fragment). This information is considered to be commercially sensitive.

Synonyms

mKIAA4033; Mouse Mpo

Contact

☎ | 400-999-6126

✉ | cn.market@abclonal.com.cn

🌐 | www.abclonal.com.cn

Product Information

Source

Rabbit

Isotype

IgG

Purification

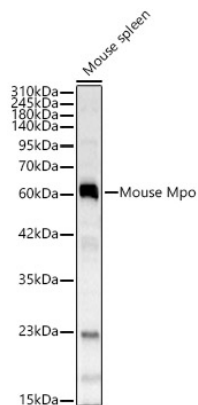
Affinity purification

Storage

Store at -20°C. Avoid freeze / thaw cycles.

Buffer: PBS containing 50% glycerol, preserved with proclin300 or sodium azide (as specified on the Certificate of Analysis), pH 7.3.

Validation Data



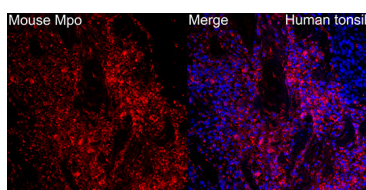
Western blot analysis of lysates from Mouse spleen, using Mouse Mpo Rabbit pAb (A24531) at 1:1000 dilution.

Secondary antibody: HRP-conjugated Goat anti-Rabbit IgG (H+L) (AS014) at 1:10000 dilution.

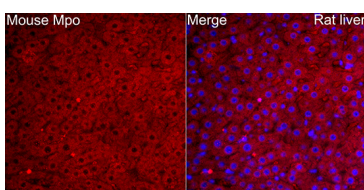
Blocking buffer: 3% nonfat dry milk in TBST.

Detection: ECL Basic Kit (RM00020).

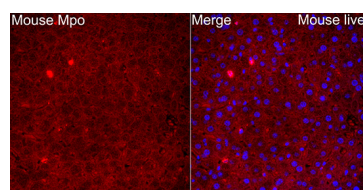
Exposure time: 45s.



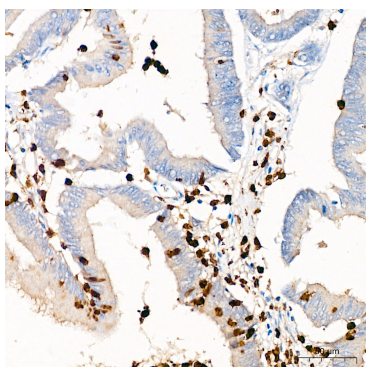
Immunofluorescence analysis of paraffin-embedded Human tonsil using Mouse Mpo Rabbit pAb(A24531) at a dilution of 1:100 (40x lens). Secondary antibody: Cy3 Goat Anti-Rabbit IgG (H+L)(AS007) at 1:500 dilution. Blue: DAPI for nuclear staining. Perform high pressure antigen retrieval with 0.01 M citrate buffer (pH 6.0) prior to IF staining.



Immunofluorescence analysis of paraffin-embedded Rat liver using Mouse Mpo Rabbit pAb(A24531) at a dilution of 1:100 (40x lens). Secondary antibody: Cy3 Goat Anti-Rabbit IgG (H+L)(AS007) at 1:500 dilution. Blue: DAPI for nuclear staining. Perform high pressure antigen retrieval with 0.01 M citrate buffer (pH 6.0) prior to IF staining.



Immunofluorescence analysis of paraffin-embedded Mouse liver using Mouse Mpo Rabbit pAb(A24531) at a dilution of 1:100 (40x lens). Secondary antibody: Cy3 Goat Anti-Rabbit IgG (H+L)(AS007) at 1:500 dilution. Blue: DAPI for nuclear staining. Perform high pressure antigen retrieval with 0.01 M citrate buffer (pH 6.0) prior to IF staining.



Immunohistochemistry analysis of paraffin-embedded Human colon carcinoma using Mouse Mpo Rabbit pAb (A24531) at dilution of 1:100 (40x lens). High pressure antigen retrieval performed with 0.01M Citrate buffer (pH 6.0) prior to IHC staining.