

CLPB Rabbit pAb

Catalog No.: A24533 **1 Publications**

Basic Information

Observed MW

Refer to figures

Calculated MW

57kDa/72kDa/74kDa/75kDa/78kDa

Category

Primary antibody

Applications

ELISA, IHC-P

Cross-Reactivity

Mouse, Rat

Background

This gene belongs to the ATP-ases associated with diverse cellular activities (AAA+) superfamily. Members of this superfamily form ring-shaped homo-hexamers and have highly conserved ATPase domains that are involved in various processes including DNA replication, protein degradation and reactivation of misfolded proteins. All members of this family hydrolyze ATP through their AAA+ domains and use the energy generated through ATP hydrolysis to exert mechanical force on their substrates. In addition to an AAA+ domain, the protein encoded by this gene contains a C-terminal D2 domain, which is characteristic of the AAA+ subfamily of Caseinolytic peptidases to which this protein belongs. It cooperates with Hsp70 in the disaggregation of protein aggregates. Allelic variants of this gene are associated with 3-methylglutaconic aciduria, which causes cataracts and neutropenia. Alternative splicing results in multiple transcript variants.

Recommended Dilutions

IHC-P 1:50 - 1:200

Immunogen Information

Gene ID

81570

Swiss Prot

Q9H078

Immunogen

Recombinant fusion protein containing a sequence corresponding to amino acids 572-707 of human CLPB (NP_110440.1).

Synonyms

CLPB; ANKCLB; HSP78; MEGCANN; MGCA7; SKD3; caseinolytic peptidase B protein homolog

Contact

 | 400-999-6126 | cn.market@abclonal.com.cn | www.abclonal.com.cn

Product Information

Source

Rabbit

Isotype

IgG

Purification

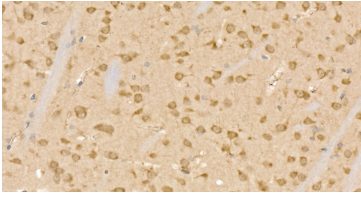
Affinity purification

Storage

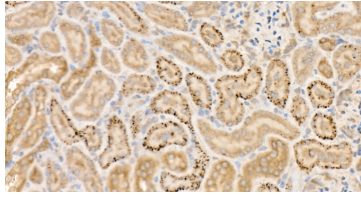
Store at -20°C. Avoid freeze / thaw cycles.

Buffer: PBS with 0.05% proclin300, 50% glycerol, pH7.3.

Validation Data



Immunohistochemistry analysis of CLPB in paraffin-embedded mouse brain using CLPB Rabbit pAb (A24533) at dilution of 1:200 (40x lens). Perform high pressure antigen retrieval with 0.01M citrate buffer pH 6.0 before commencing with IHC staining protocol.



Immunohistochemistry analysis of CLPB in paraffin-embedded rat kidney using CLPB Rabbit pAb (A24533) at dilution of 1:200 (40x lens). Perform high pressure antigen retrieval with 0.01M citrate buffer pH 6.0 before commencing with IHC staining protocol.