

VISTA / B7-H5 / GI24 Rabbit pAb

Catalog No.: A24535

Basic Information

Observed MW

45-65kDa

Calculated MW

33kDa

Category

Primary antibody

Applications

WB,IHC-P,ELISA

Cross-Reactivity

Human, Rat

Background

Enables endopeptidase activator activity; enzyme binding activity; and identical protein binding activity. Involved in several processes, including negative regulation of cytokine production; positive regulation of macromolecule metabolic process; and regulation of T cell activation. Located in plasma membrane.

Recommended Dilutions

WB 1:500 - 1:1000

IHC-P 1:50 - 1:200

ELISA Recommended starting concentration is 1 µg/mL. Please optimize the concentration based on your specific assay requirements.

Immunogen Information

Gene ID

64115

Swiss Prot

Q9H7M9

Immunogen

Recombinant protein (or fragment). This information is considered to be commercially sensitive.

Synonyms

VSIR; B7-H5; B7H5; C10orf54; DD1alpha; GI24; PD-1H; PP2135; SISP1; VISTA; V-set immunoregulatory receptor; VISTA / B7-H5 / GI24

Contact

☎ | 400-999-6126

✉ | cn.market@abclonal.com.cn

🌐 | www.abclonal.com.cn

Product Information

Source

Rabbit

Isotype

IgG

Purification

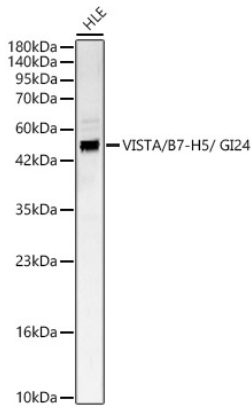
Affinity purification

Storage

Store at -20°C. Avoid freeze / thaw cycles.

Buffer: PBS containing 50% glycerol, preserved with proclin300 or sodium azide (as specified on the Certificate of Analysis), pH 7.3.

Validation Data



Western blot analysis of lysates from HLE cells, using VISTA / B7-H5 / GI24 Rabbit pAb (A24535) at 1:1000 dilution.

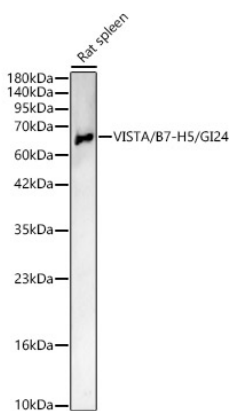
Secondary antibody: HRP-conjugated Goat anti-Rabbit IgG (H+L) (AS014) at 1:10000 dilution.

Lysates/proteins: 25µg per lane.

Blocking buffer: 3% nonfat dry milk in TBST.

Detection: ECL Basic Kit (RM00020).

Exposure time: 30s.



Western blot analysis of lysates from Rat spleen, using VISTA / B7-H5 / GI24 Rabbit pAb (A24535) at 1:1000 dilution.

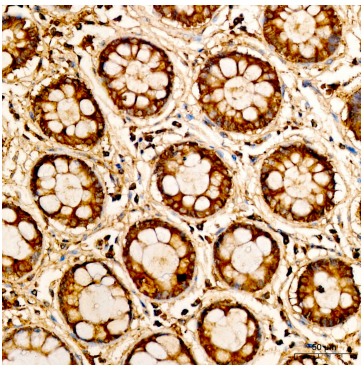
Secondary antibody: HRP-conjugated Goat anti-Rabbit IgG (H+L) (AS014) at 1:10000 dilution.

Lysates/proteins: 25µg per lane.

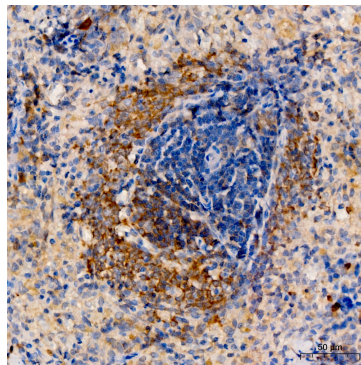
Blocking buffer: 3% nonfat dry milk in TBST.

Detection: ECL Basic Kit (RM00020).

Exposure time: 60s.



Immunohistochemistry analysis of paraffin-embedded Human colon tissue using VISTA / B7-H5 / GI24 Rabbit pAb (A24535) at a dilution of 1:50 (40x lens). High pressure antigen retrieval performed with 0.01M Citrate buffer (pH 6.0) prior to IHC staining.



Immunohistochemistry analysis of paraffin-embedded Rat spleen tissue using VISTA / B7-H5 / GI24 Rabbit pAb (A24535) at a dilution of 1:50 (40x lens). High pressure antigen retrieval performed with 0.01M Citrate buffer (pH 6.0) prior to IHC staining.