

SF-1 Rabbit pAb

Catalog No.: A24536 **1 Publications**

Basic Information

Observed MW

50kDa

Calculated MW

51kDa

Category

Primary antibody

Applications

ELISA, WB

Cross-Reactivity

Rat

Background

The protein encoded by this gene is a transcriptional activator involved in sex determination. The encoded protein binds DNA as a monomer. Defects in this gene are a cause of XY sex reversal with or without adrenal failure as well as adrenocortical insufficiency without ovarian defect.

Recommended Dilutions

WB 1:500 - 1:1000

Immunogen Information

Gene ID

2516

Swiss Prot

Q13285

Immunogen

Recombinant fusion protein containing a sequence corresponding to amino acids 218-461 of human SF-1 (NP_004950.2).

Synonyms

NR5A1; AD4BP; ELP; FTZ1; FTZF1; POF7; SF-1; SF1; SPGF8; SRXY3; hSF-1; SRXX4; steroidogenic factor 1

Contact

☎ | 400-999-6126

✉ | cn.market@abclonal.com.cn

🌐 | www.abclonal.com.cn

Product Information

Source

Rabbit

Isotype

IgG

Purification

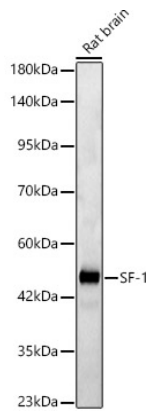
Affinity purification

Storage

Store at -20°C. Avoid freeze / thaw cycles.

Buffer: PBS with 0.05% proclin300, 50% glycerol, pH7.3.

Validation Data



Western blot analysis of Rat brain, using SF-1 Rabbit pAb (A24536) at 1:1000 dilution.
Secondary antibody: HRP Goat Anti-Rabbit IgG (H+L) (AS014) at 1:10000 dilution.
Lysates/proteins: 25ug per lane.
Blocking buffer: 3% nonfat dry milk in TBST.
Detection: ECL Basic Kit (RM00020).
Exposure time: 60s.