

# Lipocalin-2/NGAL Rabbit pAb

Catalog No.: A24538

## Basic Information

### Observed MW

23kDa

### Calculated MW

23kDa

### Category

Primary antibody

### Applications

ELISA, WB, IHC-P, IF/ICC

### Cross-Reactivity

Human, Mouse, Rat

## Background

Enables iron ion binding activity. Involved in innate immune response; positive regulation of cold-induced thermogenesis; and siderophore transport. Acts upstream of or within extrinsic apoptotic signaling pathway in absence of ligand; response to bacterium; and response to virus. Located in extracellular space. Is expressed in several structures, including genitourinary system; gut; liver; lung; and spleen. Human ortholog(s) of this gene implicated in intrahepatic cholangiocarcinoma and urinary tract infection. Orthologous to human LCN2 (lipocalin 2).

## Recommended Dilutions

WB	1:500 - 1:1000
IHC-P	1:50 - 1:200
IF/ICC	1:50 - 1:200

## Immunogen Information

### Gene ID

16819

### Swiss Prot

P11672

### Immunogen

Recombinant fusion protein containing a sequence corresponding to amino acids 21-200 of mouse Lipocalin-2/NGAL (NP\_032517.1).

### Synonyms

24p3; AW212229; NRL; Sip24; Lipocalin-2/NGAL

## Contact

	400-999-6126
	cn.market@abclonal.com.cn
	www.abclonal.com.cn

## Product Information

### Source

Rabbit

### Isotype

IgG

### Purification

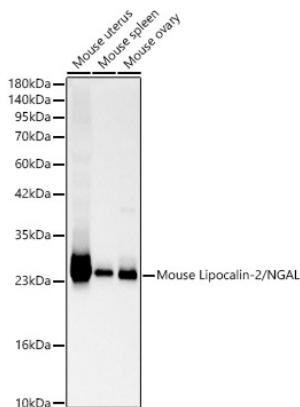
Affinity purification

### Storage

Store at -20°C. Avoid freeze / thaw cycles.

Buffer: PBS with 0.05% proclin300, 50% glycerol, pH7.3.

## Validation Data



Western blot analysis of various lysates, using Mouse Lipocalin-2/NGAL Rabbit pAb (A24538) at 1:800 dilution.

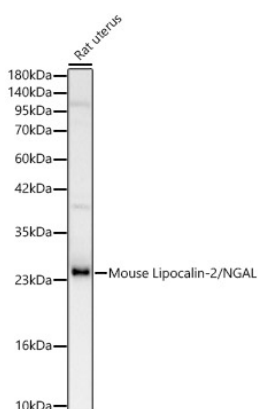
Secondary antibody: HRP Goat Anti-Rabbit IgG (H+L) (AS014) at 1:10000 dilution.

Lysates/proteins: 25ug per lane.

Blocking buffer: 3% nonfat dry milk in TBST.

Detection: ECL Basic Kit (RM00020).

Exposure time: 1s.



Western blot analysis of lysates from Rat uterus, using Mouse Lipocalin-2/NGAL Rabbit pAb (A24538) at 1:800 dilution.

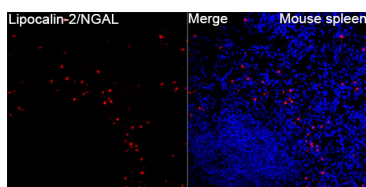
Secondary antibody: HRP Goat Anti-Rabbit IgG (H+L) (AS014) at 1:10000 dilution.

Lysates/proteins: 25ug per lane.

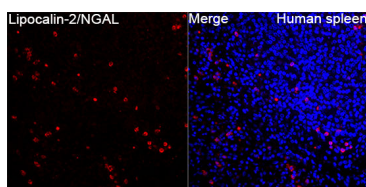
Blocking buffer: 3% nonfat dry milk in TBST.

Detection: ECL Basic Kit (RM00020).

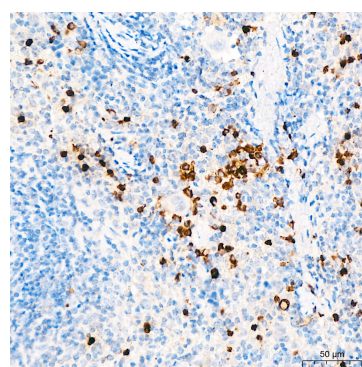
Exposure time: 60s.



Immunofluorescence analysis of Mouse spleen tissue using Lipocalin-2/NGAL Rabbit pAb (A24538) at a dilution of 1:100 (40x lens). Secondary antibody: Cy3-conjugated Goat anti-Rabbit IgG (H+L)(AS007) at 1:500 dilution. Blue: DAPI for nuclear staining. High pressure antigen retrieval performed with 0.01M Citrate Buffer (pH 6.0) prior to IF staining.



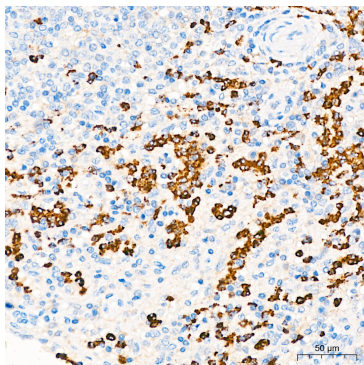
Immunofluorescence analysis of Human spleen tissue using Lipocalin-2/NGAL Rabbit pAb (A24538) at a dilution of 1:100 (40x lens). Secondary antibody: Cy3-conjugated Goat anti-Rabbit IgG (H+L)(AS007) at 1:500 dilution. Blue: DAPI for nuclear staining. High pressure antigen retrieval performed with 0.01M Citrate Buffer (pH 6.0) prior to IF staining.



Immunohistochemistry analysis of paraffin-embedded Human tonsil tissue using Lipocalin-2/NGAL Rabbit pAb (A24538) at a dilution of 1:100 (40x lens). High pressure antigen retrieval performed with 0.01M Citrate Buffer (pH 6.0) prior to IHC staining.

## Validation Data

---



Immunohistochemistry analysis of paraffin-embedded Human spleen tissue using Lipocalin-2/NGAL Rabbit pAb (A24538) at a dilution of 1:100 (40x lens). High pressure antigen retrieval performed with 0.01M Citrate Buffer (pH 6.0) prior to IHC staining.