

nm23 Rabbit pAb

Catalog No.: A24540

Basic Information

Observed MW

Refer to figures

Calculated MW

17kDa

Category

Primary antibody

Applications

ELISA, IHC-P

Cross-Reactivity

Human, Rat

Background

This gene (NME1) was identified because of its reduced mRNA transcript levels in highly metastatic cells. Nucleoside diphosphate kinase (NDK) exists as a hexamer composed of 'A' (encoded by this gene) and 'B' (encoded by NME2) isoforms. Mutations in this gene have been identified in aggressive neuroblastomas. Two transcript variants encoding different isoforms have been found for this gene. Co-transcription of this gene and the neighboring downstream gene (NME2) generates naturally-occurring transcripts (NME1-NME2), which encodes a fusion protein comprised of sequence sharing identity with each individual gene product. Nucleoside diphosphate kinase (NDK) exists as a hexamer composed of 'A' (encoded by NME1) and 'B' (encoded by this gene) isoforms. Multiple alternatively spliced transcript variants have been found for this gene. Read-through transcription from the neighboring upstream gene (NME1) generates naturally-occurring transcripts (NME1-NME2) that encode a fusion protein comprised of sequence sharing identity with each individual gene product.

Recommended Dilutions

IHC-P 1:50 - 1:200

Immunogen Information

Gene ID

4830/4831

Swiss Prot

P15531/P22392

Immunogen

Recombinant fusion protein containing a sequence corresponding to amino acids 1-152 of human nm23 (NP_000260.1/NP_002503.1).

Synonyms

NB; AWD; NBS; GAAD; NDKA; NM23; NDPKA; NDPK-A; NM23-H1; PUF; NDKB; NDPKB; NM23B; NDPK-B; NM23-H2; nm23

Contact

☎ | 400-999-6126

✉ | cn.market@abclonal.com.cn

🌐 | www.abclonal.com.cn

Product Information

Source

Rabbit

Isotype

IgG

Purification

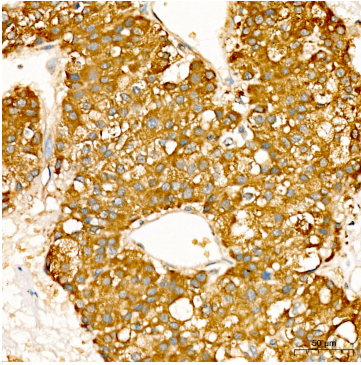
Affinity purification

Storage

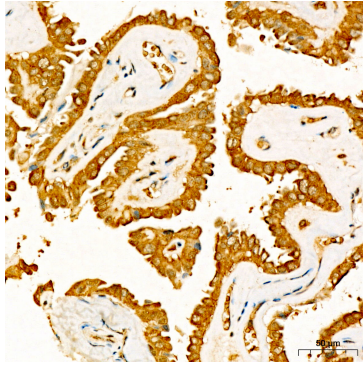
Store at -20°C. Avoid freeze / thaw cycles.

Buffer: PBS with 0.05% proclin300, 50% glycerol, pH7.3.

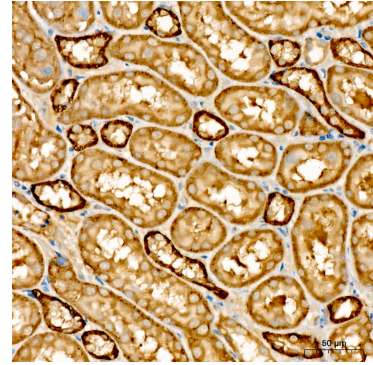
Validation Data



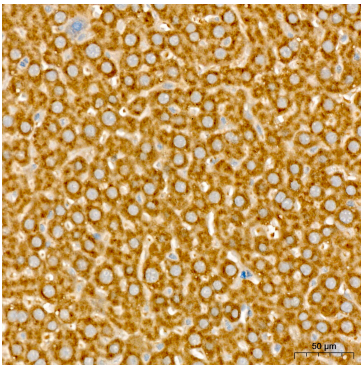
Immunohistochemistry analysis of paraffin-embedded human liver cancer using nm23 Rabbit pAb (A24540) at dilution of 1:200 (40x lens). Perform high pressure antigen retrieval with 10 mM citrate buffer pH 6.0 before commencing with IHC staining protocol.



Immunohistochemistry analysis of paraffin-embedded human thyroid cancer using nm23 Rabbit pAb (A24540) at dilution of 1:200 (40x lens). Perform high pressure antigen retrieval with 10 mM citrate buffer pH 6.0 before commencing with IHC staining protocol.



Immunohistochemistry analysis of paraffin-embedded rat kidney using nm23 Rabbit pAb (A24540) at dilution of 1:200 (40x lens). Perform high pressure antigen retrieval with 10 mM citrate buffer pH 6.0 before commencing with IHC staining protocol.



Immunohistochemistry analysis of paraffin-embedded rat liver using nm23 Rabbit pAb (A24540) at dilution of 1:200 (40x lens). Perform high pressure antigen retrieval with 10 mM citrate buffer pH 6.0 before commencing with IHC staining protocol.