

AASS Rabbit pAb

Catalog No.: A24544

Basic Information

Observed MW

102kDa

Calculated MW

102kDa

Category

Primary antibody

Applications

ELISA, WB, IHC-P

Cross-Reactivity

Human, Mouse, Rat

Background

This gene encodes a bifunctional enzyme that catalyzes the first two steps in the mammalian lysine degradation pathway. The N-terminal and the C-terminal portions of this enzyme contain lysine-ketoglutarate reductase and saccharopine dehydrogenase activity, respectively, resulting in the conversion of lysine to alpha-amino adipic semialdehyde. Mutations in this gene are associated with familial hyperlysinemia.

Recommended Dilutions

WB 1:50 - 1:200

IHC-P 1:50 - 1:200

Immunogen Information

Gene ID

10157

Swiss Prot

Q9UDR5

Immunogen

Recombinant fusion protein containing a sequence corresponding to amino acids 480-600 of human AASS (NP_005754.2).

Synonyms

AASS; LKR/SDH; LKRSDH; LORS DH; amino adipate-semialdehyde synthase

Contact

☎ | 400-999-6126

✉ | cn.market@abclonal.com.cn

🌐 | www.abclonal.com.cn

Product Information

Source

Rabbit

Isotype

IgG

Purification

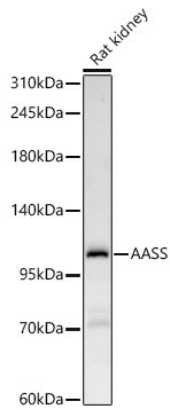
Affinity purification

Storage

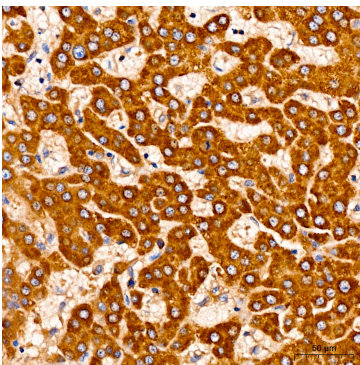
Store at -20°C. Avoid freeze / thaw cycles.

Buffer: PBS with 0.05% proclin300, 50% glycerol, pH7.3.

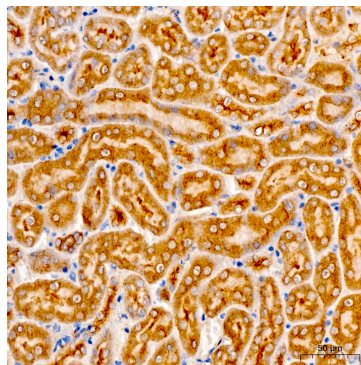
Validation Data



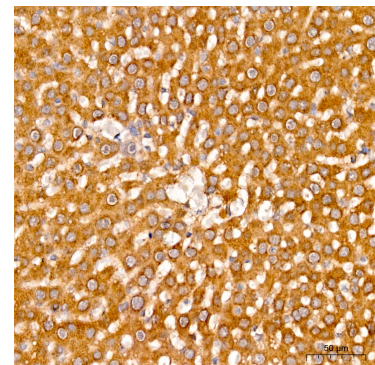
Western blot analysis of lysates from Rat kidney, using AASS Rabbit pAb (A24544) at 1:100 dilution.
Secondary antibody: HRP Goat Anti-Rabbit IgG (H+L) (AS014) at 1:10000 dilution.
Lysates/proteins: 25ug per lane.
Blocking buffer: 3% nonfat dry milk in TBST.
Detection: ECL Basic Kit (RM00020).
Exposure time: 180s.



Immunohistochemistry analysis of AASS in paraffin-embedded human liver using AASS Rabbit pAb (A24544) at dilution of 1:100 (40x lens). Perform high pressure antigen retrieval with 10 mM citrate buffer pH 6.0 before commencing with IHC staining protocol.



Immunohistochemistry analysis of AASS in paraffin-embedded mouse kidney using AASS Rabbit pAb (A24544) at dilution of 1:100 (40x lens). Perform high pressure antigen retrieval with 10 mM citrate buffer pH 6.0 before commencing with IHC staining protocol.



Immunohistochemistry analysis of AASS in paraffin-embedded rat liver using AASS Rabbit pAb (A24544) at dilution of 1:100 (40x lens). Perform high pressure antigen retrieval with 10 mM citrate buffer pH 6.0 before commencing with IHC staining protocol.