

XPNPEP3 Rabbit pAb

Catalog No.: A24545

Basic Information

Observed MW

57kDa

Calculated MW

31kDa/32kDa/48kDa/54kDa/57kDa

Category

Primary antibody

Applications

ELISA, WB

Cross-Reactivity

Human, Mouse

Background

The protein encoded by this gene belongs to the family of X-pro-aminopeptidases that utilize a metal cofactor, and remove the N-terminal amino acid from peptides with a proline residue in the penultimate position. This protein has been shown to localize to the mitochondria of renal cells, and have a role in ciliary function. Mutations in this gene are associated with nephronophthisis-like nephropathy-1. Alternatively spliced transcript variants encoding different isoforms have been noted for this gene, however, expression of some of these isoforms in vivo is not known.

Recommended Dilutions

WB 1:500 - 1:1000

Immunogen Information

Gene ID

63929

Swiss Prot

Q9NQH7

Immunogen

Recombinant fusion protein containing a sequence corresponding to amino acids 32-230 of human XPNPEP3 (NP_071381.1).

Synonyms

XPNPEP3; APP3; ICP55; NPHPL1; X-prolyl aminopeptidase 3

Contact

☎ | 400-999-6126

✉ | cn.market@abclonal.com.cn

🌐 | www.abclonal.com.cn

Product Information

Source

Rabbit

Isotype

IgG

Purification

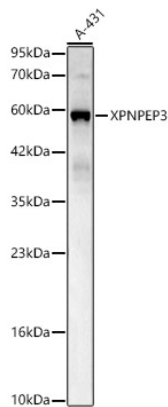
Affinity purification

Storage

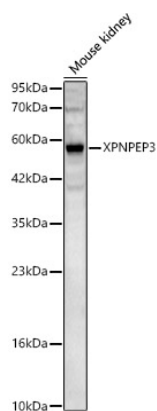
Store at -20°C. Avoid freeze / thaw cycles.

Buffer: PBS with 0.05% proclin300, 50% glycerol, pH7.3.

Validation Data



Western blot analysis of lysates from A-431 cells, using XPNPEP3 Rabbit pAb (A24545) at 1:600 dilution.
Secondary antibody: HRP Goat Anti-Rabbit IgG (H+L) (AS014) at 1:10000 dilution.
Lysates/proteins: 25ug per lane.
Blocking buffer: 3% nonfat dry milk in TBST.
Detection: ECL Basic Kit (RM00020).
Exposure time: 60s.



Western blot analysis of lysates from Mouse kidney, using XPNPEP3 Rabbit pAb (A24545) at 1:600 dilution.
Secondary antibody: HRP Goat Anti-Rabbit IgG (H+L) (AS014) at 1:10000 dilution.
Lysates/proteins: 25ug per lane.
Blocking buffer: 3% nonfat dry milk in TBST.
Detection: ECL Basic Kit (RM00020).
Exposure time: 90s.