

Mouse PIGF Rabbit pAb

Catalog No.: A24547

Basic Information

Observed MW

22kDa

Calculated MW

17kDa

Category

Primary antibody

Applications

ELISA, WB

Cross-Reactivity

Mouse

Background

Predicted to enable identical protein binding activity; receptor ligand activity; and vascular endothelial growth factor receptor binding activity. Acts upstream of or within branching involved in ureteric bud morphogenesis and regulation of morphogenesis of a branching structure. Located in extracellular space. Is expressed in several structures, including brain; gut gland; musculature; reproductive system; and urinary system. Human ortholog(s) of this gene implicated in several diseases, including brain ischemia; diabetic neuropathy; glioblastoma; myocardial infarction; and pancreatic endocrine carcinoma. Orthologous to human PGF (placental growth factor).

Recommended Dilutions

WB 1:1000 - 1:5000

Immunogen Information

Gene ID

18654

Swiss Prot

P49764

Immunogen

Recombinant fusion protein containing a sequence corresponding to amino acids 24-158 of mouse PIGF (NP_032853.1).

Synonyms

PIGF; Plgf; Mouse PIGF

Contact

☎ | 400-999-6126

✉ | cn.market@abclonal.com.cn

🌐 | www.abclonal.com.cn

Product Information

Source

Rabbit

Isotype

IgG

Purification

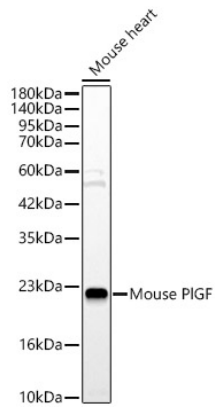
Affinity purification

Storage

Store at -20°C. Avoid freeze / thaw cycles.

Buffer: PBS with 0.05% proclin300, 50% glycerol, pH7.3.

Validation Data



Western blot analysis of lysates from Mouse heart, using Mouse PIGF Rabbit pAb (A24547) at 1:2000 dilution.

Secondary antibody: HRP Goat Anti-Rabbit IgG (H+L) (AS014) at 1:10000 dilution.

Lysates/proteins: 25ug per lane.

Blocking buffer: 3% nonfat dry milk in TBST.

Detection: ECL Basic Kit (RM00020).

Exposure time: 180s.