

# ABflo® 594 Rabbit anti-Human CLEC12A/CD371 mAb

Catalog No.: A24581

## Basic Information

### Observed MW

### Calculated MW

8kDa/24kDa/27kDa/30kDa/32kDa

### Category

Primary antibody

### Applications

FC

### Cross-Reactivity

Human

### CloneNo number

ARC55557-ABflo594

### Conjugate

ABflo® 594. Ex:588nm. Em:604nm.

## Recommended Dilutions

FC 5 µl per 10<sup>6</sup> cells in  
100 µl volume

## Background

This gene encodes a member of the C-type lectin/C-type lectin-like domain (CTL/CTLD) superfamily. Members of this family share a common protein fold and have diverse functions, such as cell adhesion, cell-cell signaling, glycoprotein turnover, and roles in inflammation and immune response. The protein encoded by this gene is a negative regulator of granulocyte and monocyte function. Several alternatively spliced transcript variants of this gene have been described, but the full-length nature of some of these variants has not been determined. This gene is closely linked to other CTL/CTLD superfamily members in the natural killer gene complex region on chromosome 12p13.

## Immunogen Information

### Gene ID

160364

### Swiss Prot

Q5QGZ9

### Immunogen

Recombinant fusion protein containing a sequence corresponding to amino acids 65-265 of human CLEC12A/CD371(NP\_612210.4)

### Synonyms

CLEC12A; CD371; CLL-1; CLL1; DCAL-2; M1CL; C-type lectin domain family 12 member A

## Contact

☎ | 400-999-6126

✉ | [cn.market@abclonal.com.cn](mailto:cn.market@abclonal.com.cn)

🌐 | [www.abclonal.com.cn](http://www.abclonal.com.cn)

## Product Information

### Source

Rabbit

### Isotype

IgG

### Purification

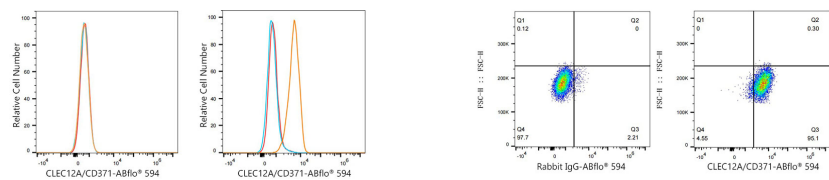
Affinity purification

### Storage

Store at 2-8°C. Avoid freeze.

Buffer: PBS with 0.03% proclin300,0.2% BSA,pH7.3.

## Validation Data



Flow cytometry:  $1 \times 10^6$  K-562 cells (negative control, left) and U-937 cells (right) were surface-stained with ABflo® 594 Rabbit anti-Human CLEC12A/CD371 mAb (A24581,5  $\mu\text{l}/\text{Test}$ , orange line) or ABflo® 594 Rabbit IgG isotype control (A23821,5  $\mu\text{l}/\text{Test}$ , blue line). Non-fluorescently stained cells were used as blank control (red line).

Flow cytometry:  $1 \times 10^6$  U-937 cells were surface-stained with ABflo® 594 Rabbit IgG isotype control (A23821,5  $\mu\text{l}/\text{Test}$ , left) or ABflo® 594 Rabbit anti-Human CLEC12A/CD371 mAb (A24581,5  $\mu\text{l}/\text{Test}$ , right).