

ABflo® 594 Rabbit anti-Human CD166/ALCAM mAb

Catalog No.: A24582

Basic Information

Observed MW

Calculated MW

15kDa/33kDa/63kDa/65kDa

Category

Primary antibody

Applications

FC

Cross-Reactivity

Human

CloneNo number

ARC57933-ABflo594

Conjugate

ABflo® 594. Ex:588nm. Em:604nm.

Recommended Dilutions

FC 5 µl per 10⁶ cells in
100 µl volume

Background

This gene encodes activated leukocyte cell adhesion molecule (ALCAM), also known as CD166 (cluster of differentiation 166), which is a member of a subfamily of immunoglobulin receptors with five immunoglobulin-like domains (VVC2C2C2) in the extracellular domain. This protein binds to T-cell differentiation antigen CD6, and is implicated in the processes of cell adhesion and migration. Multiple alternatively spliced transcript variants encoding different isoforms have been found.

Immunogen Information

Gene ID

214

Swiss Prot

Q13740

Immunogen

Recombinant fusion protein containing a sequence corresponding to amino acids 28-526 of human CD166/ALCAM(NP_001618.2)

Synonyms

ALCAM; CD166; MEMD; CD166 antigen

Contact

 | 400-999-6126

 | cn.market@abclonal.com.cn

 | www.abclonal.com.cn

Product Information

Source

Rabbit

Isotype

IgG

Purification

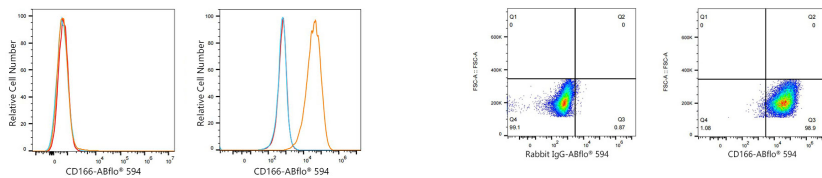
Affinity purification

Storage

Store at 2-8°C. Avoid freeze.

Buffer: PBS with 0.03% proclin300,0.2% BSA,pH7.3.

Validation Data



Flow cytometry: 1×10^6 K-562 cells (negative control, left) and SH-SY5Y cells (right) were surface-stained with ABflo® 594 Rabbit anti-Human CD166/ALCAM mAb (A24582, 5 μ l/Test, orange line) or ABflo® 594 Rabbit IgG isotype control (A23821, 5 μ l/Test, blue line). Non-fluorescently stained cells were used as blank control (red line).

Flow cytometry: 1×10^6 SH-SY5Y cells were surface-stained with ABflo® 594 Rabbit IgG isotype control (A23821, 5 μ l/Test, left) or ABflo® 594 Rabbit anti-Human CD166/ALCAM mAb (A24582, 5 μ l/Test, right).