

# ABflo® 594 Rabbit anti-Human CD7 mAb

Catalog No.: A24583

## Basic Information

### Observed MW

Refer to figures

### Calculated MW

25kDa

### Category

Primary antibody

### Applications

FC

### Cross-Reactivity

Human

### CloneNo number

ARC54668-ABflo594

### Conjugate

ABflo® 594. Ex:588nm. Em:604nm.

## Recommended Dilutions

FC 5 µl per 10<sup>6</sup> cells in  
100 µl volume

## Background

This gene encodes a transmembrane protein which is a member of the immunoglobulin superfamily. This protein is found on thymocytes and mature T cells. It plays an essential role in T-cell interactions and also in T-cell/B-cell interaction during early lymphoid development.

## Immunogen Information

### Gene ID

924

### Swiss Prot

P09564

### Immunogen

Recombinant fusion protein containing a sequence corresponding to amino acids 26-180 of human CD7 (NP\_006128.1).

### Synonyms

CD7; GP40; LEU-9; TP41; Tp40; CD7 molecule

## Contact

☎ | 400-999-6126

✉ | [cn.market@abclonal.com.cn](mailto:cn.market@abclonal.com.cn)

🌐 | [www.abclonal.com.cn](http://www.abclonal.com.cn)

## Product Information

### Source

Rabbit

### Isotype

IgG

### Purification

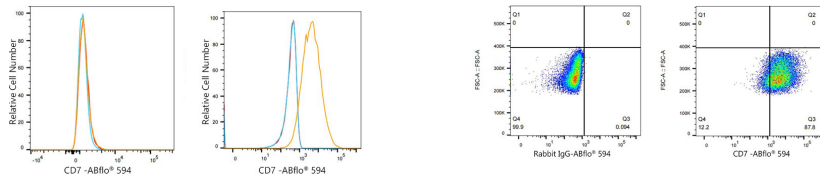
Affinity purification

### Storage

Store at 2-8°C. Avoid freeze.

Buffer: PBS with 0.03% proclin300,0.2% BSA,pH7.3.

## Validation Data



Flow cytometry:  $1 \times 10^6$  A549 cells (negative control, left) and MOLT-4 cells (right) were surface-stained with ABflo® 594 Rabbit anti-Human CD7 mAb (A24583, 5  $\mu$ l/Test, orange line) or ABflo® 594 Rabbit IgG isotype control (A23821, 5  $\mu$ l/Test, blue line). Non-fluorescently stained cells were used as blank control (red line).

Flow cytometry:  $1 \times 10^6$  MOLT-4 cells were surface-stained with ABflo® 594 Rabbit IgG isotype control (A23821, 5  $\mu$ l/Test, left) or ABflo® 594 Rabbit anti-Human CD7 mAb (A24583, 5  $\mu$ l/Test, right).