

ABflo® 594 Rabbit anti-Human CEACAM5/CD66e mAb

Catalog No.: A24586

Basic Information

Observed MW

Calculated MW

76kDa

Category

Primary antibody

Applications

FC

Cross-Reactivity

Human

CloneNo number

ARC58527-ABflo594

Conjugate

ABflo® 594. Ex:588nm. Em:604nm.

Recommended Dilutions

FC 5 µl per 10⁶ cells in
100 µl volume

Background

This gene encodes a cell surface glycoprotein that represents the founding member of the carcinoembryonic antigen (CEA) family of proteins. The encoded protein is used as a clinical biomarker for gastrointestinal cancers and may promote tumor development through its role as a cell adhesion molecule. Additionally, the encoded protein may regulate differentiation, apoptosis, and cell polarity. This gene is present in a CEA family gene cluster on chromosome 19. Alternative splicing results in multiple transcript variants.

Immunogen Information

Gene ID

1048

Swiss Prot

P06731

Immunogen

Recombinant fusion protein containing a sequence corresponding to amino acids 35-685 of human CEACAM5/CD66e(NP_004354.3)

Synonyms

CEACAM5; CD66e; CEA; carcinoembryonic antigen-related cell adhesion molecule 5

Contact

☎ | 400-999-6126

✉ | cn.market@abclonal.com.cn

🌐 | www.abclonal.com.cn

Product Information

Source

Rabbit

Isotype

IgG

Purification

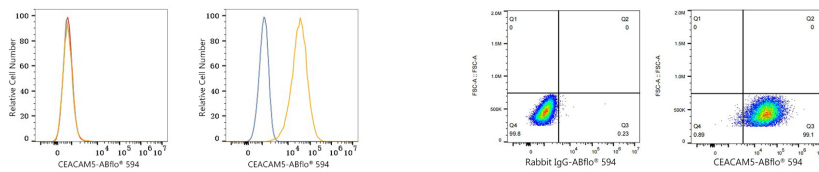
Affinity purification

Storage

Store at 2-8°C. Avoid freeze.

Buffer: PBS with 0.03% proclin300,0.2% BSA,pH7.3.

Validation Data



Flow cytometry: 1×10^6 293T cells (negative control, left) and HT-29 cells (right) were surface-stained with ABflo® 594 Rabbit anti-Human CEACAM5/CD66e mAb (A24586, 5 μ l/Test, orange line) or ABflo® 594 Rabbit IgG isotype control (A23821, 5 μ l/Test, blue line). Non-fluorescently stained cells were used as blank control (red line).

Flow cytometry: 1×10^6 HT-29 cells were surface-stained with ABflo® 594 Rabbit IgG isotype control (A23821, 5 μ l/Test, left) or ABflo® 594 Rabbit anti-Human CEACAM5/CD66e mAb (A24586, 5 μ l/Test, right).